

Cooling Capacity: 24,000 - 57,000 BTU/h  
Heating Capacity: 24,000 - 57,000 BTU/h

*High-Efficiency  
Split System Heat Pump Up to  
17 SEER & 9.5 HSPF*



**Contents**

Nomenclature ..... 2  
Accessories ..... 2  
Product Specifications ..... 3  
Expanded Cooling Data ..... 4  
Expanded Heating Data ..... 20  
AHRI Ratings ..... 22  
Dimensions ..... 30  
Wiring Diagram ..... 31  
Accessories ..... 34

**Standard Features**

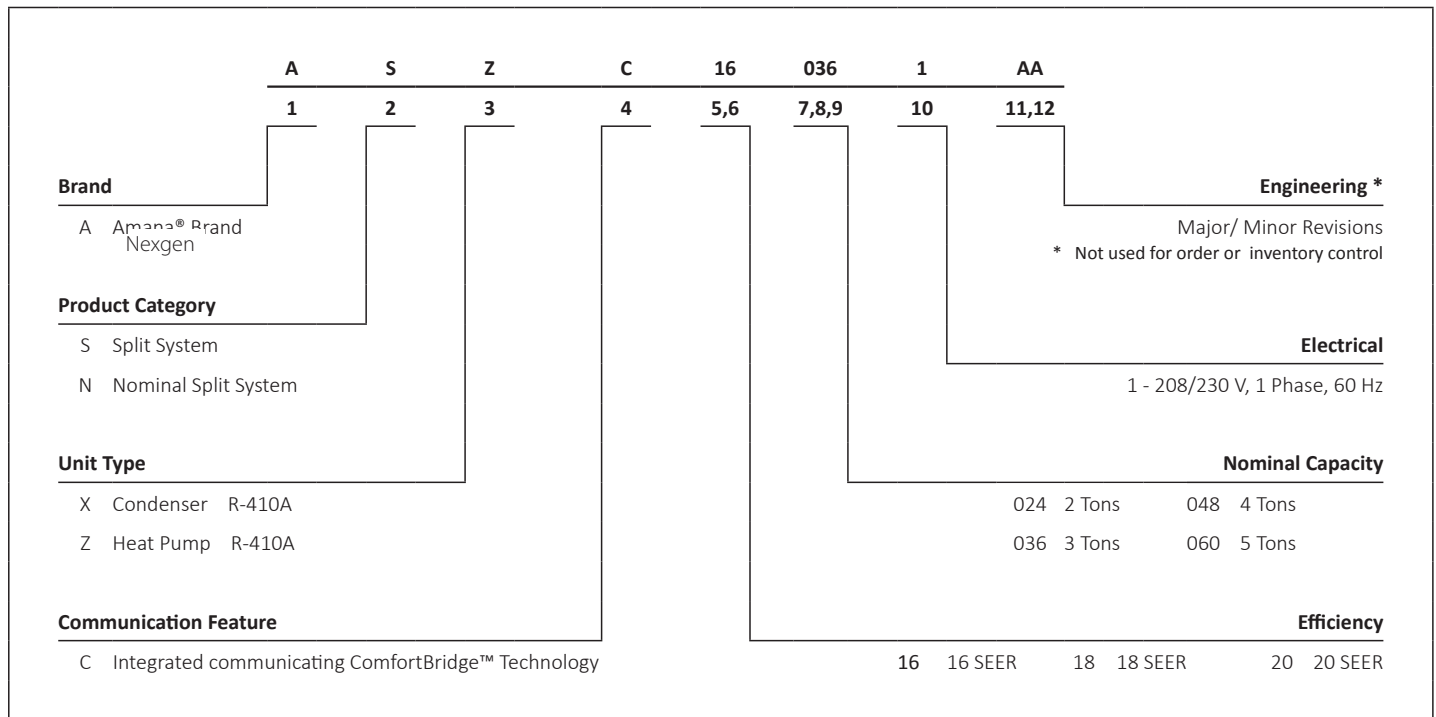
- Two-Stage Copeland® UltraTech scroll compressor
- High-density foam compressor sound blanket
- Integrated communicating ComfortBridge™ Technology
- Commissioning and diagnostics via indoor board Bluetooth with the CoolCloud™ phone and tablet application
- Expanded ComfortAlert™ diagnostics built in
- Simple low-voltage wiring to out-door unit in communicating mode
- Diagnostic indicator lights and storage of six fault codes
- Color-coded terminal strip for non-communicating set-up
- SmartShift® technology to ensure quiet, reliable defrost
- Factory-installed bi-flow liquid-line filter drier
- Factory-installed transformer
- Factory-installed suction-line accumulator
- Factory-installed compressor crankcase heater
- Factory-installed high-capacity muffler
- Factory-installed coil and ambient temperature sensors
- Fully charged for 15' of tubing length
- Sweat connection service valves with easy access to gauge ports
- AHRI Certified; ETL Listed





**Cabinet Features**

- Heavy-gauge galvanized steel enclosure with sound-control top
- Wire fan discharge grille
- Steel louver coil guard
- Baked-on powder paint finish
- Rust-resistant coated screws
- Compact footprint
- Top and side maintenance access
- Single-panel access to controls with space provided for field-installed accessories
- When properly anchored, meets 2010 Florida Building Code unit integrity requirements for hurricane-type winds (Anchor bracket kits available.)



\* Complete warranty details available on [www.nexgenairandheat.com](http://www.nexgenairandheat.com). To receive the Lifetime Unit Replacement Warranty (good for as long as you own your home) and 10-Year Parts Lifetime Warranty, in order to qualify for lifetime replacement warranty you need to be part of the X Protection Family. Membership must be current and up-to-date.



	ASZC16 0241C	ASZC16 0361C	ASZC16 0481C	ASZC16 0601C
<b>CAPACITIES AND RATINGS</b>				
Nominal Cooling (BTU/h)	24,000	36,000	48,000	60,000
Nominal Heating (BTU/h)	24,000	36,000	48,000	60,000
Decibels	73	73	75	75
<b>COMPRESSOR</b>				
RLA	10.0	14.8	20.4	22.9
LRA	62.9	84.2	122.1	147.2
<b>CONDENSER FAN MOTOR</b>				
Horsepower	1/5	1/5	1/5	1/3
FLA	1.0	1.0	1.0	2.8
<b>REFRIGERATION SYSTEM</b>				
Refrigerant Line Size <sup>1</sup>				
Liquid Line Size ("O.D.)	3/8"	3/8"	3/8"	3/8"
Suction Line Size ("O.D.)	3/4"	7/8"	1 1/8"	1 1/8"
Refrigerant Connection Size				
Liquid Valve Size ("O.D.)	3/8"	3/8"	3/8"	3/8"
Suction Valve Size ("O.D.)	3/4"	7/8"	7/8"	7/8"
Valve Connection Type	Sweat	Sweat	Sweat	Sweat
Refrigerant Charge (oz.)	176	170	244	288
Shipped with Orifice Size	NA	NA	NA	NA
<b>ELECTRICAL DATA</b>				
Volts -Hz	208/230-60-1	208/230-60-1	208/230-60-1	208/230-60-1
Minimum Circuit Ampacity <sup>2</sup>	13.5	19.5	26.5	31.4
Max. Overcurrent Protection <sup>3</sup>	20	30	45	50
Min / Max Volts	197/253	197/253	197/253	197/253
Power Supply Conduit Size	1/2" or 3/4"	1/2" or 3/4"	1/2" or 3/4"	1/2" or 3/4"
<b>EQUIPMENT WEIGHT (LBS)</b>	215	240	291	313
<b>SHIP WEIGHT (LBS)</b>	240	266	316	339
<b>ENERGY STAR CERTIFIED <sup>^</sup></b>				

<sup>1</sup> Tested and rated in accordance with AHRI Standard 210/240

<sup>2</sup> Wire size should be determined in accordance with National Electrical Codes; extensive wire runs will require larger wire sizes

<sup>3</sup> Must use time-delay fuses or HACR-type circuit breakers of the same size as noted.

**NOTES**

- Always check the rating plate for electrical data on the unit being installed.
- Installer will need to supply 3/8" to 1 1/8" adapters for suction line connections.
- Unit is charged with refrigerant for 15' of 3/8" liquid line. System charge must be adjusted per Installation Instructions Final Charge Procedure.
- Installation of these units requires the specified TXV Kit to be installed on the indoor coil.  
THE SPECIFIED TXV IS DETERMINED BY THE OUTDOOR UNIT, NOT THE INDOOR COIL.

**<sup>^</sup> ENERGY STAR NOTES**

- Proper sizing and installation of equipment is critical to achieve optimal performance. Split system air conditioners and heat pumps must be matched with appropriate coil components to meet ENERGY STAR<sup>®</sup> criteria. Ask your contractor for details or visit [www.energystar.gov](http://www.energystar.gov).
- The [www.energystar.gov](http://www.energystar.gov) website provides up-to-date system combinations certified to meet ENERGY STAR requirements. See Page 22 for all ENERGY STAR-certified combinations as of this document's revision date.

IDB	AIRFLOW	OUTDOOR AMBIENT TEMPERATURE																							
		65°F				75°F				85°F				95°F				105°F				115°F			
		59	63	67	71	59	63	67	71	59	63	67	71	59	63	67	71	59	63	67	71	59	63	67	71
70	MBh	17.7	18.0	18.5	-	17.6	17.8	18.3	-	17.1	17.4	17.9	-	16.3	16.6	17.1	-	15.4	15.6	16.1	-	14.5	14.7	15.3	-
	S/T	0.66	0.59	0.45	-	0.67	0.60	0.46	-	0.70	0.62	0.48	-	1.00	0.64	0.50	-	1.00	0.66	0.53	-	1.00	0.71	0.58	-
	ΔT	19	17	14	-	19	17	14	-	19	17	14	-	19	17	14	-	19	17	13	-	20	18	15	-
	kW	0.75	0.75	0.75	-	0.84	0.84	0.84	-	0.93	0.93	0.93	-	1.03	1.03	1.03	-	1.15	1.15	1.15	-	1.28	1.28	1.28	-
	Amps	3.3	3.2	3.2	-	3.6	3.6	3.6	-	4.1	4.1	4.1	-	4.5	4.5	4.5	-	5.1	5.1	5.0	-	5.7	5.7	5.7	-
75	MBh	18.1	18.3	18.8	-	17.9	18.2	18.7	-	17.5	17.7	18.2	-	16.7	16.9	17.4	-	15.7	16.0	16.5	-	14.8	15.1	15.6	-
	S/T	0.70	0.63	0.49	-	0.71	0.63	0.50	-	1.00	0.66	0.52	-	1.00	0.68	0.54	-	1.00	0.70	0.56	-	1.00	1.00	0.62	-
	ΔT	18	16	13	-	18	16	13	-	18	16	13	-	18	16	12	-	18	16	12	-	19	17	13	-
	kW	0.76	0.76	0.76	-	0.84	0.84	0.84	-	0.94	0.94	0.93	-	1.04	1.04	1.04	-	1.15	1.15	1.15	-	1.29	1.28	1.28	-
	Amps	3.3	3.3	3.3	-	3.7	3.7	3.6	-	4.1	4.1	4.1	-	4.6	4.6	4.5	-	5.1	5.1	5.1	-	5.7	5.7	5.7	-
77	MBh	18.5	18.7	19.3	-	18.3	18.6	19.1	-	17.9	18.1	18.6	-	17.1	17.3	17.9	-	16.1	16.4	16.9	-	15.2	15.5	16.0	-
	S/T	0.71	0.63	0.50	-	0.71	0.64	0.50	-	1.00	0.66	0.53	-	1.00	0.68	0.55	-	1.00	0.71	0.57	-	1.00	1.00	0.62	-
	ΔT	17	15	12	-	17	15	12	-	17	15	12	-	17	15	12	-	17	15	11	-	18	16	12	-
	kW	0.76	0.76	0.76	-	0.85	0.85	0.84	-	0.94	0.94	0.94	-	1.04	1.04	1.04	-	1.16	1.15	1.15	-	1.29	1.29	1.29	-
	Amps	3.3	3.3	3.3	-	3.7	3.7	3.7	-	4.1	4.1	4.1	-	4.6	4.6	4.6	-	5.1	5.1	5.1	-	5.7	5.7	5.7	-

IDB	AIRFLOW	OUTDOOR AMBIENT TEMPERATURE																							
		65°F				75°F				85°F				95°F				105°F				115°F			
		59	63	67	71	59	63	67	71	59	63	67	71	59	63	67	71	59	63	67	71	59	63	67	71
520	MBh	17.7	18.0	18.5	-	17.6	17.8	18.3	-	17.1	17.4	17.9	-	16.3	16.6	17.1	-	15.4	15.6	16.1	-	14.5	14.7	15.3	-
	S/T	0.66	0.59	0.45	-	0.67	0.60	0.46	-	0.70	0.62	0.48	-	1.00	0.64	0.50	-	1.00	0.66	0.53	-	1.00	0.71	0.58	-
	ΔT	19	17	14	-	19	17	14	-	19	17	14	-	19	17	14	-	19	17	13	-	20	18	15	-
	kW	0.75	0.75	0.75	-	0.84	0.84	0.84	-	0.93	0.93	0.93	-	1.03	1.03	1.03	-	1.15	1.15	1.15	-	1.28	1.28	1.28	-
	Amps	3.3	3.2	3.2	-	3.6	3.6	3.6	-	4.1	4.1	4.1	-	4.5	4.5	4.5	-	5.1	5.1	5.0	-	5.7	5.7	5.7	-
600	MBh	18.1	18.3	18.8	-	17.9	18.2	18.7	-	17.5	17.7	18.2	-	16.7	16.9	17.4	-	15.7	16.0	16.5	-	14.8	15.1	15.6	-
	S/T	0.70	0.63	0.49	-	0.71	0.63	0.50	-	1.00	0.66	0.52	-	1.00	0.68	0.54	-	1.00	0.70	0.56	-	1.00	1.00	0.62	-
	ΔT	18	16	13	-	18	16	13	-	18	16	13	-	18	16	12	-	18	16	12	-	19	17	13	-
	kW	0.76	0.76	0.76	-	0.84	0.84	0.84	-	0.94	0.94	0.93	-	1.04	1.04	1.04	-	1.15	1.15	1.15	-	1.29	1.28	1.28	-
	Amps	3.3	3.3	3.3	-	3.7	3.7	3.6	-	4.1	4.1	4.1	-	4.6	4.6	4.5	-	5.1	5.1	5.1	-	5.7	5.7	5.7	-
675	MBh	18.5	18.7	19.3	-	18.3	18.6	19.1	-	17.9	18.1	18.6	-	17.1	17.3	17.9	-	16.1	16.4	16.9	-	15.2	15.5	16.0	-
	S/T	0.71	0.63	0.50	-	0.71	0.64	0.50	-	1.00	0.66	0.53	-	1.00	0.68	0.55	-	1.00	0.71	0.57	-	1.00	1.00	0.62	-
	ΔT	17	15	12	-	17	15	12	-	17	15	12	-	17	15	12	-	17	15	11	-	18	16	12	-
	kW	0.76	0.76	0.76	-	0.85	0.85	0.84	-	0.94	0.94	0.94	-	1.04	1.04	1.04	-	1.16	1.15	1.15	-	1.29	1.29	1.29	-
	Amps	3.3	3.3	3.3	-	3.7	3.7	3.7	-	4.1	4.1	4.1	-	4.6	4.6	4.6	-	5.1	5.1	5.1	-	5.7	5.7	5.7	-

IDB: Entering Indoor Dry Bulb Temperature  
 High and low pressures are measured at the liquid and suction service valves.  
 Shaded area reflects ACCA (TVA) conditions  
 kW = Total system power  
 Amps = outdoor unit amps (compressor + fan)

























IDB	AIRFLOW	OUTDOOR AMBIENT TEMPERATURE												ENTERING INDOOR WET BULB TEMPERATURE												
		65°F				75°F				85°F				95°F				105°F				115°F				
		59	63	67	71	59	63	67	71	59	63	67	71	59	63	67	71	59	63	67	71	59	63	67	71	
70	1120	MBh	43.6	44.2	45.5	-	43.2	43.8	45.1	-	42.1	42.7	44.0	-	40.1	40.7	42.0	-	37.7	38.4	39.7	-	35.6	36.2	37.5	-
		S/T	0.61	0.54	0.41	-	0.61	0.54	0.41	-	0.64	0.57	0.44	-	0.66	0.58	0.46	-	1.00	0.61	0.48	-	1.00	0.65	0.53	-
	ΔT	21	19	15	-	21	19	15	-	21	19	15	-	21	19	15	-	21	19	15	-	22	20	16	-	
	kW	1.67	1.67	1.66	-	1.89	1.89	1.89	-	2.14	2.14	2.14	-	2.41	2.41	2.41	-	2.72	2.71	2.71	-	3.07	3.07	3.07	-	
	Amps	7.0	7.0	7.0	-	8.0	8.0	8.0	-	9.2	9.1	9.1	-	10.4	10.4	10.4	-	11.8	11.8	11.8	-	13.4	13.4	13.4	-	
	Hi PR	200	201	203	-	232	233	234	-	265	266	267	-	300	301	303	-	339	340	341	-	380	380	382	-	
	Lo PR	120	122	125	-	128	129	132	-	134	136	139	-	139	141	144	-	145	146	149	-	151	153	156	-	
	1200	MBh	43.9	44.5	45.8	-	43.5	44.1	45.4	-	42.4	43.0	44.3	-	40.4	41.1	42.3	-	38.1	38.7	40.0	-	35.9	36.5	37.8	-
		S/T	0.64	0.56	0.43	-	0.64	0.57	0.44	-	0.67	0.59	0.46	-	0.68	0.61	0.48	-	1.00	0.63	0.50	-	1.00	0.68	0.55	-
	1440	MBh	45.1	45.7	47.0	-	44.7	45.3	46.6	-	43.5	44.2	45.5	-	41.6	42.2	43.5	-	39.2	39.8	41.1	-	37.0	37.7	39.0	-
S/T		0.68	0.60	0.48	-	0.68	0.61	0.48	-	0.71	0.63	0.50	-	1.00	0.65	0.52	-	1.00	0.67	0.54	-	1.00	0.72	0.59	-	
75	1120	MBh	43.6	44.2	45.5	47.5	43.2	43.8	45.1	47.1	42.1	42.7	44.0	46.0	40.2	40.8	42.1	44.0	37.8	38.4	39.7	41.7	35.6	36.2	37.5	39.5
		S/T	0.73	0.66	0.53	0.39	0.74	0.67	0.54	0.40	1.00	0.69	0.56	0.42	1.00	0.71	0.58	0.44	1.00	0.73	0.60	0.46	1.00	0.78	0.65	0.51
	ΔT	25	23	20	16	25	23	20	16	26	24	20	16	25	23	20	16	25	23	19	15	26	24	20	17	
	kW	1.67	1.66	1.66	1.68	1.89	1.89	1.88	1.90	2.14	2.14	2.14	2.15	2.41	2.41	2.41	2.42	2.72	2.71	2.71	2.73	3.07	3.07	3.07	3.08	
	Amps	7.0	7.0	6.9	7.0	8.0	8.0	8.0	8.1	9.1	9.1	9.1	9.2	10.4	10.4	10.4	10.4	11.8	11.8	11.8	11.8	13.4	13.4	13.4	13.5	
	Hi PR	201	201	203	206	232	233	234	238	265	266	267	271	301	301	303	306	339	340	341	345	380	381	382	385	
	Lo PR	120	122	125	130	128	129	132	137	134	136	139	144	139	141	144	149	145	146	149	154	151	153	156	161	
	1200	MBh	43.9	44.5	45.8	47.8	43.5	44.2	45.5	47.4	42.4	43.0	44.3	46.3	40.5	41.1	42.4	44.4	38.1	38.7	40.0	42.0	35.9	36.5	37.8	39.8
		S/T	0.76	0.69	0.56	0.42	0.77	0.69	0.56	0.43	1.00	0.72	0.59	0.45	1.00	0.73	0.61	0.47	1.00	0.76	0.63	0.49	1.00	0.81	0.68	0.54
	1440	MBh	45.1	45.7	47.0	49.0	44.7	45.3	46.6	48.6	43.6	44.2	45.5	47.5	41.6	42.2	43.5	45.5	39.2	39.9	41.2	43.1	37.1	37.7	39.0	41.0
S/T		0.80	0.73	0.60	0.46	0.81	0.73	0.60	0.47	1.00	0.76	0.63	0.49	1.00	0.78	0.65	0.51	1.00	0.80	0.67	0.53	1.00	1.00	0.72	0.58	

IDB: Entering Indoor Dry Bulb Temperature  
 High and low pressures are measured at the liquid and suction service valves.  
 Shaded area reflects ACCA (TVA) conditions  
 kW = Total system power  
 Amps = outdoor unit amps (compressor + fan)









ASZC160241C\* / CA\*F3137\*6A\*+MBVC1200\*\*-1A\*+TX — LOW STAGE

	OUTDOOR AMBIENT TEMPERATURE																
	65	60	55	50	47	45	40	35	30	25	20	17	15	10	5	0	-5
MBh	21.21	19.75	18.32	16.91	16.02	15.33	13.61	12.04	10.77	9.82	9.10	8.71	8.23	7.01	5.79	4.58	3.36
T/R	35.97	33.83	31.68	29.53	28.25	27.03	24.00	21.24	19.00	17.32	16.05	15.37	14.51	12.37	10.22	8.07	5.93
KW	1.03	1.01	0.98	0.96	0.94	0.93	0.90	0.88	0.85	0.83	0.80	0.79	0.78	0.75	0.72	0.70	0.67
AMPS	3.7	3.5	3.4	3.3	3.3	3.2	3.1	3.0	2.9	2.8	2.7	2.6	2.5	2.4	2.3	2.2	2.1
COP	6.02	5.75	5.48	5.19	4.99	4.83	4.41	4.02	3.70	3.48	3.33	3.25	3.11	2.74	2.34	1.92	1.46
Hi PR	362	350	339	327	320	315	303	292	280	268	256	249	244	233	221	209	197
LO PR	143	134	125	116	111	107	99	90	81	72	63	58	54	45	36	27	18

ASZC160241C\* / CA\*F3137\*6A\*+MBVC1200\*\*-1A\*+TX — HIGH STAGE

	OUTDOOR AMBIENT TEMPERATURE																
	65	60	55	50	47	45	40	35	30	25	20	17	15	10	5	0	-5
MBh	28.42	26.68	24.97	23.29	22.20	21.41	19.43	17.56	16.03	14.91	14.09	13.65	13.08	11.66	10.23	8.81	7.38
T/R	28.12	26.65	25.19	23.72	22.84	22.05	19.99	18.07	16.49	15.34	14.50	14.04	13.46	11.99	10.52	9.06	7.59
KW	1.68	1.66	1.65	1.64	1.63	1.62	1.61	1.59	1.58	1.56	1.55	1.54	1.53	1.52	1.50	1.49	1.47
AMPS	5.9	5.8	5.7	5.7	5.6	5.6	5.6	5.5	5.4	5.4	5.3	5.3	5.2	5.2	5.1	5.0	5.0
COP	4.96	4.70	4.44	4.17	4.00	3.87	3.55	3.23	2.98	2.80	2.67	2.60	2.50	2.25	1.99	1.73	1.47
Hi PR	374	362	349	337	330	325	313	301	289	277	264	257	252	240	228	216	204
LO PR	146	137	127	118	113	109	100	91	82	73	64	59	55	46	37	28	19

ASZC160361C\* / CA\*F3743\*6D\*+MBVC1600\*\*-1A\*+TX — LOW STAGE

	OUTDOOR AMBIENT TEMPERATURE																
	65	60	55	50	47	45	40	35	30	25	20	17	15	10	5	0	-5
MBh	32.21	30.06	27.94	25.86	24.53	23.52	21.00	18.69	16.81	15.40	14.35	13.79	13.07	11.28	9.50	7.71	5.92
T/R	38.24	36.03	33.82	31.61	30.28	29.04	25.92	23.07	20.75	19.02	17.72	17.03	16.14	13.93	11.72	9.51	7.30
KW	1.75	1.70	1.64	1.59	1.56	1.53	1.48	1.42	1.37	1.31	1.26	1.22	1.20	1.15	1.09	1.04	0.98
AMPS	6.4	6.2	6.0	5.7	5.6	5.5	5.2	5.0	4.8	4.5	4.3	4.1	4.0	3.8	3.6	3.3	3.1
COP	5.38	5.18	4.98	4.77	4.62	4.49	4.16	3.85	3.60	3.44	3.34	3.30	3.19	2.88	2.55	2.18	1.77
Hi PR	415	401	388	374	366	361	347	334	320	307	293	285	280	266	253	239	226
LO PR	134	126	117	109	104	101	92	84	76	67	59	54	51	42	34	26	17

ASZC160361C\* / CA\*F3743\*6D\*+MBVC1600\*\*-1A\*+TX — HIGH STAGE

	OUTDOOR AMBIENT TEMPERATURE																
	65	60	55	50	47	45	40	35	30	25	20	17	15	10	5	0	-5
MBh	43.10	40.55	38.05	35.59	34.00	32.84	30.01	27.28	25.04	23.40	22.23	21.60	20.77	18.71	16.64	14.57	12.51
T/R	35.53	33.76	31.99	30.21	29.15	28.21	25.73	23.39	21.47	20.07	19.06	18.52	17.81	16.04	14.27	12.49	10.72
KW	2.87	2.82	2.77	2.72	2.69	2.67	2.62	2.58	2.53	2.48	2.43	2.40	2.38	2.33	2.28	2.23	2.18
AMPS	10.8	10.6	10.3	10.1	10.0	9.9	9.7	9.5	9.3	9.1	8.8	8.7	8.6	8.4	8.2	8.0	7.8
COP	4.40	4.21	4.02	3.83	3.70	3.60	3.35	3.10	2.91	2.77	2.68	2.64	2.56	2.35	2.14	1.91	1.68
Hi PR	428	414	400	386	378	372	359	345	331	317	303	294	289	275	261	247	233
LO PR	137	128	120	111	106	103	94	86	77	69	60	55	52	43	35	26	18

Calculations are based on nominal CFM and 70 °F indoor dry bulb.

Amps = Outdoor unit amps (comp.+fan)

Note: Shaded area is AHRI Rating Conditions at 47°F outdoor ambient temperature

kW = Total system power

ASZC160481C\* / CA\*F4961\*6D\*+MBVC2000\*\*-1A\*+TX — LOW STAGE

	OUTDOOR AMBIENT TEMPERATURE																
	65	60	55	50	47	45	40	35	30	25	20	17	15	10	5	0	-5
MBh	44.95	41.85	38.81	35.81	33.91	32.44	28.78	25.46	22.76	20.74	19.21	18.39	17.35	14.77	12.18	9.59	7.01
T/R	40.84	38.39	35.95	33.50	32.04	30.65	27.19	24.06	21.51	19.59	18.15	17.37	16.39	13.95	11.51	9.06	6.62
KW	2.12	2.10	2.07	2.05	2.03	2.02	1.99	1.97	1.94	1.92	1.89	1.87	1.86	1.84	1.81	1.79	1.76
AMPS	7.7	7.6	7.5	7.3	7.3	7.2	7.1	7.0	6.9	6.8	6.7	6.6	6.5	6.4	6.3	6.2	6.1
COP	6.20	5.85	5.49	5.13	4.89	4.71	4.23	3.79	3.44	3.17	2.98	2.88	2.73	2.35	1.97	1.57	1.17
Hi PR	393	380	367	354	347	341	329	316	303	290	278	270	265	252	239	227	214
LO PR	129	121	113	105	100	97	89	81	73	65	57	52	49	41	33	25	17

ASZC160481C\* / CA\*F4961\*6D\*+MBVC2000\*\*-1A\*+TX — HIGH STAGE

	OUTDOOR AMBIENT TEMPERATURE																
	65	60	55	50	47	45	40	35	30	25	20	17	15	10	5	0	-5
MBh	60.24	56.53	52.89	49.31	47.00	45.33	41.10	37.13	33.87	31.48	29.74	28.80	27.59	24.55	21.52	18.49	15.45
T/R	33.52	31.77	30.01	28.25	27.20	26.25	23.79	21.48	19.60	18.22	17.21	16.67	15.96	14.21	12.45	10.70	8.94
KW	3.42	3.45	3.47	3.50	3.51	3.52	3.55	3.58	3.60	3.63	3.65	3.67	3.68	3.71	3.73	3.76	3.78
AMPS	12.3	12.4	12.6	12.7	12.7	12.8	12.9	13.0	13.1	13.2	13.3	13.4	13.5	13.6	13.7	13.8	13.9
COP	5.16	4.81	4.46	4.13	3.92	3.77	3.39	3.04	2.76	2.54	2.38	2.30	2.20	1.94	1.69	1.44	1.20
Hi PR	405	392	379	366	358	352	339	326	313	300	286	279	273	260	247	234	221
LO PR	131	123	115	107	102	99	91	82	74	66	58	53	50	41	33	25	17

ASZC160601C\* / CA\*F4961\*6D\*+MBVC2000\*\*-1A\*+TX — LOW STAGE

	OUTDOOR AMBIENT TEMPERATURE																
	65	60	55	50	47	45	40	35	30	25	20	17	15	10	5	0	-5
MBh	57.01	53.11	49.45	45.46	42.92	40.93	36.01	31.58	27.98	25.27	23.20	22.09	20.70	17.23	13.76	10.28	6.81
T/R	46.24	43.34	40.44	37.55	35.81	34.14	30.03	26.34	23.34	21.08	19.35	18.43	17.27	14.37	11.47	8.58	5.68
KW	2.89	2.82	2.76	2.69	2.65	2.62	2.56	2.49	2.42	2.36	2.29	2.25	2.23	2.16	2.09	2.03	1.96
AMPS	10.8	10.5	10.2	9.9	9.8	9.6	9.4	9.1	8.8	8.5	8.2	8.0	7.9	7.6	7.3	7.0	6.8
COP	5.78	5.51	5.26	4.95	4.75	4.57	4.13	3.71	3.38	3.14	2.97	2.88	2.73	2.34	1.93	1.49	1.02
Hi PR	445	431	416	402	393	387	373	358	344	329	315	306	300	286	272	257	243
LO PR	132	123	115	107	102	99	91	83	74	66	58	53	50	42	33	25	17

ASZC160601C\* / CA\*F4961\*6D\*+MBVC2000\*\*-1A\*+TX — HIGH STAGE

	OUTDOOR AMBIENT TEMPERATURE																
	65	60	55	50	47	45	40	35	30	25	20	17	15	10	5	0	-5
MBh	77.42	72.40	67.46	62.61	59.50	57.20	51.36	45.97	41.58	38.31	35.90	34.60	32.94	28.79	24.64	20.49	16.34
T/R	40.55	38.29	36.03	33.77	32.41	31.15	27.97	25.04	22.65	20.87	19.55	18.85	17.94	15.68	13.42	11.16	8.90
KW	4.70	4.67	4.64	4.61	4.59	4.58	4.55	4.52	4.49	4.46	4.43	4.41	4.40	4.37	4.34	4.31	4.28
AMPS	17.7	17.6	17.5	17.3	17.3	17.2	17.1	16.9	16.8	16.7	16.5	16.5	16.4	16.3	16.2	16.0	15.9
COP	4.83	4.55	4.26	3.98	3.80	3.66	3.31	2.98	2.72	2.52	2.38	2.30	2.20	1.93	1.67	1.39	1.12
Hi PR	460	445	430	415	406	400	385	370	355	340	325	316	310	295	280	265	250
LO PR	134	126	117	109	104	101	92	84	76	67	59	54	51	42	34	26	17

Calculations are based on nominal CFM and 70 °F indoor dry bulb.

Amps = Outdoor unit amps (comp.+fan)

Note: Shaded area is AHRI Rating Conditions at 47°F outdoor ambient temperature

kW = Total system power



ENERGY STAR-CERTIFIED COMBINATIONS <sup>^</sup>

OUTDOOR UNIT	INDOOR UNITS		COOLING RATINGS <sup>o</sup>				TVA RATINGS <sup>3</sup>		HEATING RATINGS <sup>^</sup>			CFM	AHRI #
	COILS/AIR HANDLERS	FURNACES	TOTAL	SENS.	SEER <sup>1</sup>	EER <sup>2</sup>	TOTAL	SENS.	HI <sup>4</sup>	HSPF <sup>5</sup>	LOW <sup>6</sup>		
ASZC16 0241C*	CA*F3137*6A*+MBVC1200**-1A*+TX		23,600	19,400	16.0	13.0	22,500	19,000	22,200	9.0	13,600	860	202149346
ASZC16 0241C*	AVPTC31C14A*		23,600	19,400	16.0	13.0	22,500	19,000	22,800	9.0	14,600	850	202149347
ASZC16 0241C*	CA*F3137*6A*+TXV	A*VC80603B*C*	23,000	19,000	16.0	13.0	22,000	18,500	22,800	9.0	14,000	800	202149453
ASZC16 0361C*	CA*F3743*6D*+MBVC1600**-1A*+TXV		34,400	26,800	16.0	13.0	33,200	26,200	34,000	9.0	21,600	1,080	202153969
ASZC16 0361C*	AVPTC37C14A*		34,800	27,000	16.0	13.0	33,600	26,600	34,200	9.0	21,600	1,220	202148961
ASZC16 0361C*	CA*F3743*6D*+TXV	A*VC960804CNB*	34,400	26,800	16.0	13.0	33,000	26,000	34,000	9.0	21,600	1,090	202149221
ASZC16 0481C*	CA*F4961*6D*+MBVC2000**-1A*+TX		48,000	38,400	16.0	13.0	46,200	37,400	47,000	9.0	28,800	1,590	202148824
ASZC16 0601C*	CA*F4961*6D*+MBVC2000**-1A*+TX		56,500	44,000	17.0	12.5	54,400	43,000	59,500	9.5	34,600	1,735	202148726
ASZC16 0601C*	CA*F4961*6D*+TXV	A*VC80805D*C*	55,000	43,000	16.0	12.5	53,000	42,000	59,500	9.5	36,400	1,460	202148760

<sup>^</sup> ENERGY STAR Notes

- Proper sizing and installation of equipment is critical to achieve optimal performance. Split system air conditioners and heat pumps must be matched with appropriate coil components to meet ENERGY STAR<sup>®</sup> criteria. Ask your contractor for details or visit [www.energystar.gov](http://www.energystar.gov).
- The [www.energystar.gov](http://www.energystar.gov) website provides up-to-date system combinations certified to meet ENERGY STAR requirements.

▶ Rated in accordance with ANSI/AHRI Standard 210/240

<sup>1</sup> Seasonal Energy Efficiency Ratio

<sup>3</sup> TVA Rating: BTU/h @ 75°F/ 63°F - 95°F

<sup>5</sup> HSPF = Heating Seasonal Performance Factor

<sup>7</sup> CFM at High stage

<sup>2</sup> Energy Efficiency Ratio @ 80°F/ 67°F/ 95°F

<sup>4</sup> Rated heating capacity at 47°F outdoor per AHRI 210/240

<sup>6</sup> Heating capacity at 17°F outdoor

<sup>8</sup> CFM at Intermediate and low stage

NOTES

- Always check the S&R plate for electrical data on the unit being installed.
- When matching outdoor unit to indoor unit, use the piston supplied with the outdoor unit or that specified on the piston kit chart supplied with the indoor unit.
- EEP - Order from Service Dept. Part No. B13707-38 or new Solid State Board B13707-35S. Part No. B13707-38 is not interchangeable with B13707-35S. The Ar<sup>Nexgen</sup> and gas furnace contains the EEP cooling time delay.

OUTDOOR UNIT	INDOOR UNITS		COOLING RATINGS ^				TVA RATINGS ^3		HEATING RATINGS ^			CFM	AHRI #
	COILS/AIR HANDLERS	FURNACES	TOTAL	SENS.	SEER <sup>1</sup>	EER <sup>2</sup>	TOTAL	SENS.	Hi <sup>4</sup>	HSPF <sup>5</sup>	Low <sup>6</sup>		
ASZC16 0241C*	CA*F3137*6A*+MBVC1200**-1A*+TXV		23,600	19,400	16.0	13.0	22,500	19,000	22,200	9.0	13,600	860	202149346
	AVPTC31C14A*		23,600	19,400	16.0	13.0	22,500	19,000	22,800	9.0	14,600	850	202149347
	AVPTC29B14A*		23,000	19,000	15.5	12.5	22,000	18,500	23,000	8.5	14,700	800	202149348
	AVPTC33C14A*		22,800	18,800	15.0	12.5	22,000	18,500	22,800	8.5	14,600	840	202149349
	AVPTC25B14A*		22,400	18,400	15.0	12.5	21,500	18,000	22,400	8.5	14,700	790	202149350
	CHPF3636B6C*+MBVC1200**-1A*+TXV		23,000	19,000	15.5	12.5	22,000	18,500	22,800	9.0	14,000	860	202149351
	CA*F3743*6D*+MBVC1200**-1A*+TXV		23,400	19,200	15.5	13.0	22,500	19,000	22,800	9.0	14,000	860	202149352
	CA*F3642*6D*+MBVC1200**-1A*+TXV		23,000	19,000	15.5	12.5	22,000	18,500	22,800	9.0	14,000	860	202149353
	CA*F3636*6D*+MBVC1200**-1A*+TXV		22,600	18,600	15.0	12.5	22,000	18,500	22,800	9.0	14,000	860	202149354
	CHPF3642C6C*+MBVC1200**-1A*+TXV		23,000	19,000	15.5	13.0	22,000	18,500	22,800	9.0	14,000	860	202149355
	CHPF3743C6B*+MBVC1200**-1A*+TXV		23,200	19,000	15.5	13.0	22,500	19,000	22,800	9.0	14,800	860	202149356
	CHPF3636B6C*+TXV	A*VC80603B*C*	22,800	18,800	15.0	12.5	22,000	18,500	22,800	8.5	14,000	800	202149357
	CA*F3743*6D*+TXV	A*VC80603B*C*	23,200	19,000	15.5	13.0	22,500	19,000	22,800	9.0	14,000	800	202149358
	CA*F3642*6D*+TXV	A*VC80603B*C*	22,800	18,800	15.0	12.5	22,000	18,500	22,800	9.0	14,000	800	202149450
	CA*F3636*6D*+TXV	A*VC80603B*C*	22,400	18,400	15.0	12.5	21,500	18,000	22,800	9.0	14,000	800	202149451
	CHPF3642C6C*+TXV	A*VC80603B*C*	22,800	18,800	15.0	12.5	22,000	18,500	22,800	9.0	14,000	800	202149452
	CA*F3137*6A*+TXV	A*VC80603B*C*	23,000	19,000	16.0	13.0	22,000	18,500	22,800	9.0	14,000	800	202149453
	CHPF3743C6B*+TXV	A*VC80603B*C*	23,000	19,000	15.5	12.5	22,000	18,500	22,800	9.0	14,000	800	202149454
	CHPF3636B6C*+TXV	A*VC80803B*C*	22,800	18,800	15.0	12.5	22,000	18,500	22,800	8.5	14,000	800	202149455
	CA*F3743*6D*+TXV	A*VC80803B*C*	23,200	19,000	15.5	13.0	22,500	19,000	22,800	9.0	14,000	800	202149456
	CA*F3642*6D*+TXV	A*VC80803B*C*	22,800	18,800	15.0	12.5	22,000	18,500	22,800	9.0	14,000	800	202149457
	CA*F3636*6D*+TXV	A*VC80803B*C*	22,400	18,400	15.0	12.5	21,500	18,000	22,800	9.0	14,000	800	202149458
	CHPF3642C6C*+TXV	A*VC80803B*C*	22,800	18,800	15.0	12.5	22,000	18,500	22,800	8.5	14,000	800	202149459
	CA*F3137*6A*+TXV	A*VC80803B*C*	23,200	19,000	16.0	13.0	22,500	19,000	22,800	9.0	14,000	800	202149460
	CHPF3743C6B*+TXV	A*VC80803B*C*	23,000	19,000	15.5	12.5	22,000	18,500	22,800	9.0	14,000	800	202149461
	CA*F3743*6D*+TXV	A*VC80804C*C*	23,200	19,000	16.0	13.0	22,500	19,000	22,800	9.0	14,600	850	202149462
	CA*F3642*6D*+TXV	A*VC80804C*C*	22,800	18,800	15.5	12.5	22,000	18,500	22,800	9.0	14,600	850	202149463
	CA*F3636*6D*+TXV	A*VC80804C*C*	22,400	18,400	15.5	12.5	21,500	18,000	22,600	9.0	14,600	850	202149464
	CHPF3642C6C*+TXV	A*VC80804C*C*	22,800	18,800	15.5	12.5	22,000	18,500	22,800	9.0	14,600	850	202149465
	CHPF3743C6B*+TXV	A*VC80804C*C*	23,200	19,000	15.5	12.5	22,500	19,000	22,800	9.0	14,600	850	202149466
	CA*F3743*6D*+TXV	A*VC80805C*C*	23,200	19,000	16.0	13.0	22,500	19,000	22,800	9.0	14,600	810	202149467
	CA*F3642*6D*+TXV	A*VC80805C*C*	22,800	18,800	15.5	12.5	22,000	18,500	22,600	9.0	14,600	810	202149468
	CA*F3636*6D*+TXV	A*VC80805C*C*	22,400	18,400	15.5	12.5	21,500	18,000	22,600	9.0	14,600	810	202149469
	CHPF3642C6C*+TXV	A*VC80805C*C*	22,800	18,800	15.5	12.5	22,000	18,500	22,800	9.0	14,600	810	202149470
	CHPF3743C6B*+TXV	A*VC80805C*C*	23,200	19,000	15.5	13.0	22,500	19,000	22,600	9.0	14,600	810	202149471
	CA*F3743*6D*+TXV	A*VC80805D*C*	23,200	19,000	16.0	13.0	22,500	19,000	22,800	9.0	14,000	790	202149472
	CA*F3642*6D*+TXV	A*VC80805D*C*	22,800	18,800	15.5	12.5	22,000	18,500	22,800	9.0	14,000	790	202149473
	CA*F3636*6D*+TXV	A*VC80805D*C*	22,400	18,400	15.5	12.5	21,500	18,000	22,600	9.0	14,000	790	202149474
	CHPF3636B6C*+TXV	A*VC960403BNB*	22,600	18,600	15.0	12.5	22,000	18,500	22,800	9.0	14,100	810	202149475
	CA*F3743*6D*+TXV	A*VC960403BNB*	23,000	19,000	15.5	13.0	22,000	18,500	22,800	9.0	14,000	810	202149476
CA*F3642*6D*+TXV	A*VC960403BNB*	22,600	18,600	15.0	12.5	22,000	18,500	22,800	9.0	14,000	810	202149477	
CA*F3636*6D*+TXV	A*VC960403BNB*	22,400	18,400	15.0	12.5	21,500	18,000	22,800	9.0	14,000	810	202149478	
CHPF3642C6C*+TXV	A*VC960403BNB*	22,600	18,600	15.5	12.5	22,000	18,500	22,800	9.0	14,000	810	202149479	
CA*F3137*6A*+TXV	A*VC960403BNB*	23,200	19,000	15.5	13.0	22,500	19,000	22,800	9.0	14,000	810	202149480	
CHPF3743C6B*+TXV	A*VC960403BNB*	23,000	19,000	15.5	12.5	22,000	18,500	22,800	9.0	14,000	810	202149481	
CHPF3636B6C*+TXV	A*VC960803BNB*	22,600	18,600	15.0	12.5	22,000	18,500	22,800	9.0	14,000	810	202149482	
CA*F3743*6D*+TXV	A*VC960803BNB*	23,000	19,000	15.5	13.0	22,000	18,500	22,800	9.0	14,000	810	202149483	

OUTDOOR UNIT	INDOOR UNITS		COOLING RATINGS ^				TVA RATINGS ^3		HEATING RATINGS ^			CFM	AHRI #
	COILS/AIR HANDLERS	FURNACES	TOTAL	SENS.	SEER <sup>1</sup>	EER <sup>2</sup>	TOTAL	SENS.	HI <sup>4</sup>	HSPF <sup>5</sup>	LOW <sup>6</sup>		
ASZC16 0241C* (Contd.)	CA*F3642*6D*+TXV	A*VC960803BNB*	22,800	18,800	15.0	12.5	22,000	18,500	22,800	9.0	14,000	810	202149484
	CA*F3636*6D*+TXV	A*VC960803BNB*	22,400	18,400	15.0	12.5	21,500	18,000	22,800	9.0	14,000	810	202149485
	CHPF3642C6C*+TXV	A*VC960803BNB*	22,600	18,600	15.0	12.5	22,000	18,500	22,800	9.0	14,000	810	202149486
	CA*F3137*6A*+TXV	A*VC960803BNB*	23,000	19,000	16.0	13.0	22,000	18,500	22,800	9.0	14,000	810	202149487
	CHPF3743C6B*+TXV	A*VC960803BNB*	23,000	19,000	15.5	12.5	22,000	18,500	22,800	9.0	14,000	810	202149488
	CHPF3636B6C*+TXV	A*VM970803BNA*	22,600	18,600	15.0	12.5	22,000	18,500	22,800	9.0	14,000	810	202149489
	CA*F3743*6D*+TXV	A*VM970803BNA*	23,000	19,000	15.5	13.0	22,000	18,500	22,800	9.0	14,000	810	202149490
	CA*F3642*6D*+TXV	A*VM970803BNA*	22,800	18,800	15.0	12.5	22,000	18,500	22,800	9.0	14,000	810	202149491
	CA*F3636*6D*+TXV	A*VM970803BNA*	22,400	18,400	15.0	12.5	21,500	18,000	22,800	9.0	14,000	810	202149492
	CHPF3642C6C*+TXV	A*VM970803BNA*	22,600	18,600	15.0	12.5	22,000	18,500	22,800	9.0	14,000	810	202149493
	CA*F3137*6A*+TXV	A*VM970803BNA*	23,000	19,000	16.0	13.0	22,000	18,500	22,800	9.0	14,000	810	202149494
	CHPF3743C6B*+TXV	A*VM970803BNA*	23,000	19,000	15.5	12.5	22,000	18,500	22,800	9.0	14,000	810	202149495
	CHPF3636B6C*+TXV	A*VC960603BNB*	22,600	18,600	15.0	12.5	22,000	18,500	22,800	8.5	14,000	750	202149496
	CA*F3743*6D*+TXV	A*VC960603BNB*	23,000	19,000	15.5	12.5	22,000	18,500	22,800	9.0	14,000	750	202149497
	CA*F3642*6D*+TXV	A*VC960603BNB*	22,600	18,600	15.0	12.5	22,000	18,500	22,800	9.0	14,000	750	202149498
	CA*F3636*6D*+TXV	A*VC960603BNB*	22,400	18,400	15.0	12.5	21,500	18,000	22,800	9.0	14,000	750	202149499
	CHPF3642C6C*+TXV	A*VC960603BNB*	22,600	18,600	15.0	12.5	22,000	18,500	22,800	8.5	14,000	750	202149500
	CA*F3137*6A*+TXV	A*VC960603BNB*	23,000	19,000	15.5	12.5	22,000	18,500	22,800	9.0	14,000	750	202149501
	CHPF3743C6B*+TXV	A*VC960603BNB*	23,000	19,000	15.0	12.5	22,000	18,500	22,800	9.0	14,000	750	202149502
	CHPF3636B6C*+TXV	A*VM970603BNA*	22,600	18,600	15.0	12.5	22,000	18,500	22,800	8.5	14,000	750	202149503
	CA*F3743*6D*+TXV	A*VM970603BNA*	23,000	19,000	15.5	12.5	22,000	18,500	22,800	9.0	14,000	750	202149504
	CA*F3642*6D*+TXV	A*VM970603BNA*	22,600	18,600	15.0	12.5	22,000	18,500	22,800	9.0	14,000	750	202149505
	CA*F3636*6D*+TXV	A*VM970603BNA*	22,400	18,400	15.0	12.5	21,500	18,000	22,800	9.0	14,000	750	202149506
	CHPF3642C6C*+TXV	A*VM970603BNA*	22,600	18,600	15.0	12.5	22,000	18,500	22,800	8.5	14,000	750	202149507
	CA*F3137*6A*+TXV	A*VM970603BNA*	23,000	19,000	15.5	12.5	22,000	18,500	22,800	9.0	14,000	750	202149508
	CHPF3743C6B*+TXV	A*VM970603BNA*	23,000	19,000	15.0	12.5	22,000	18,500	22,800	9.0	14,000	750	202149509
	CA*F3743*6D*+TXV	A*VC960804CNB*	23,200	19,000	16.0	13.0	22,500	19,000	22,800	9.0	14,000	810	202149510
	CA*F3642*6D*+TXV	A*VC960804CNB*	22,800	18,800	15.5	12.5	22,000	18,500	22,800	9.0	14,000	810	202149511
	CA*F3636*6D*+TXV	A*VC960804CNB*	22,400	18,400	15.0	12.5	21,500	18,000	22,600	9.0	14,000	810	202149512
	CHPF3642C6C*+TXV	A*VC960804CNB*	22,800	18,800	15.5	12.5	22,000	18,500	22,800	9.0	14,000	810	202149513
	CHPF3743C6B*+TXV	A*VC960804CNB*	23,000	19,000	15.5	13.0	22,000	18,500	22,800	9.0	14,000	810	202149514
	CA*F3743*6D*+TXV	A*VM970804CNA*	23,200	19,000	16.0	13.0	22,500	19,000	22,800	9.0	14,000	810	202149515
	CA*F3642*6D*+TXV	A*VM970804CNA*	22,800	18,800	15.5	12.5	22,000	18,500	22,800	9.0	14,000	810	202149516
	CA*F3636*6D*+TXV	A*VM970804CNA*	22,400	18,400	15.0	12.5	21,500	18,000	22,600	9.0	14,000	810	202149517
	CHPF3642C6C*+TXV	A*VM970804CNA*	22,800	18,800	15.5	12.5	22,000	18,500	22,800	9.0	14,000	810	202149518
	CHPF3743C6B*+TXV	A*VM970804CNA*	23,000	19,000	15.5	13.0	22,000	18,500	22,800	9.0	14,000	810	202149519
	CA*F3743*6D*+TXV	A*VC961005CNB*	23,200	19,000	16.0	13.0	22,500	19,000	22,800	9.0	14,000	820	202149520
	CA*F3642*6D*+TXV	A*VC961005CNB*	22,800	18,800	15.5	12.5	22,000	18,500	22,800	9.0	14,000	820	202149521
	CA*F3636*6D*+TXV	A*VC961005CNB*	22,400	18,400	15.5	12.5	21,500	18,000	22,800	9.0	14,000	820	202149522
	CHPF3642C6C*+TXV	A*VC961005CNB*	22,800	18,800	15.5	12.5	22,000	18,500	22,800	9.0	14,000	820	202149523
	CHPF3743C6B*+TXV	A*VC961005CNB*	23,000	19,000	15.5	13.0	22,000	18,500	22,800	9.0	14,000	820	202149524
	CA*F3743*6D*+TXV	A*VM971005CNA*	23,200	19,000	16.0	13.0	22,500	19,000	22,800	9.0	14,000	820	202149525
	CA*F3642*6D*+TXV	A*VM971005CNA*	22,800	18,800	15.5	12.5	22,000	18,500	22,800	9.0	14,000	820	202149526
	CA*F3636*6D*+TXV	A*VM971005CNA*	22,400	18,400	15.5	12.5	21,500	18,000	22,800	9.0	14,000	820	202149527
	CHPF3642C6C*+TXV	A*VM971005CNA*	22,800	18,800	15.5	12.5	22,000	18,500	22,800	9.0	14,000	820	202149528
CHPF3743C6B*+TXV	A*VM971005CNA*	23,000	19,000	15.5	13.0	22,000	18,500	22,800	9.0	14,000	820	202149529	
CA*F3743*6D*+TXV	A*VC81005C*C*	23,200	19,000	16.0	13.0	22,500	19,000	22,800	9.0	14,600	860	202149530	
CA*F3642*6D*+TXV	A*VC81005C*C*	22,800	18,800	15.5	12.5	22,000	18,500	22,800	9.0	14,600	860	202149531	



OUTDOOR UNIT	INDOOR UNITS		COOLING RATINGS <sup>^</sup>				TVA RATINGS <sup>3</sup>		HEATING RATINGS <sup>^</sup>			CFM	AHRI#
	COILS/AIR HANDLERS	FURNACES	TOTAL	SENS.	SEER <sup>1</sup>	EER <sup>2</sup>	TOTAL	SENS.	HI <sup>4</sup>	HSPF <sup>5</sup>	LOW <sup>6</sup>		
ASZC16 0241C* (Contd.)	CA*F3636*6D*+TXV	A*VC81005C*C*	22,400	18,400	15.5	12.5	21,500	18,000	22,800	9.0	14,600	860	202149532
	CHPF3642C6C*+TXV	A*VC81005C*C*	22,800	18,800	15.5	12.5	22,000	18,500	22,800	9.0	14,600	860	202149533
	CHPF3743C6B*+TXV	A*VC81005C*C*	23,000	19,000	15.5	13.0	22,000	18,500	22,800	9.0	14,600	860	202149534
ASZC16 0361C*	CA*F3743*6D*+MBVC1600** <sup>-1A*</sup> +TXV		34,400	26,800	16.0	13.0	33,000	26,000	34,000	9.0	21,600	1,080	202148956
	AVPTC37D14A*		34,600	27,000	15.5	12.5	33,500	26,500	34,200	9.0	21,600	1,210	202148957
	AVPTC49D14A*		35,000	27,200	16.0	13.0	33,500	26,500	34,200	9.0	21,600	1,200	202148958
	AVPTC37B14A*		33,600	26,200	15.0	12.2	32,500	25,500	34,000	8.5	21,000	1,080	202148959
	AVPTC39C14A*		33,600	26,200	15.5	12.5	32,500	25,500	34,000	8.5	21,000	1,120	202148960
	AVPTC37C14A*		34,800	27,000	16.0	13.0	33,500	26,500	34,200	9.0	21,600	1,220	202148961
	CA*F3743*6D*+TXV	A*VC80603B*C*	34,400	26,800	16.0	12.5	33,000	26,000	34,200	9.0	21,600	1,100	202148962
	CA*F4860*6D*+TXV	A*VC80603B*C*	34,200	26,600	15.5	12.5	33,000	26,000	34,000	8.5	21,600	1,100	202148963
	CA*F4961*6D*+TXV	A*VC80603B*C*	34,600	27,000	16.0	13.0	33,500	26,500	34,200	9.0	21,600	1,100	202148964
	CA*F3642*6D*+TXV	A*VC80603B*C*	33,800	26,400	15.5	12.5	32,500	25,500	34,000	8.5	21,000	1,100	202148965
	CA*F3636*6D*+TXV	A*VC80603B*C*	33,400	26,000	15.0	12.2	32,000	25,000	33,400	8.5	21,000	1,100	202148966
	CA*F3137*6A*+TXV	A*VC80603B*C*	34,400	26,800	16.0	13.0	33,000	26,000	34,200	9.0	21,600	1,100	202148967
	CHPF3743C6B*+TXV	A*VC80603B*C*	33,400	26,000	15.5	12.5	32,000	25,000	33,200	8.5	21,000	1,100	202148968
	CA*F3743*6D*+TXV	A*VC80803B*C*	34,400	26,800	16.0	12.5	33,000	26,000	34,200	9.0	21,600	1,090	202148969
	CA*F4860*6D*+TXV	A*VC80803B*C*	34,200	26,600	15.5	12.5	33,000	26,000	34,000	8.5	21,600	1,090	202148970
	CA*F4961*6D*+TXV	A*VC80803B*C*	34,600	27,000	16.0	13.0	33,500	26,500	34,200	9.0	21,600	1,090	202148971
	CA*F3642*6D*+TXV	A*VC80803B*C*	33,600	26,200	15.5	12.5	32,500	25,500	33,600	8.5	21,000	1,090	202148972
	CA*F3636*6D*+TXV	A*VC80803B*C*	33,200	25,800	15.0	12.2	32,000	25,000	33,400	8.5	21,000	1,090	202148973
	CA*F3137*6A*+TXV	A*VC80803B*C*	34,400	26,800	16.0	13.0	33,000	26,000	34,200	9.0	21,600	1,090	202149170
	CHPF3743C6B*+TXV	A*VC80803B*C*	33,000	25,600	15.5	12.5	32,000	25,000	33,200	8.5	21,600	1,090	202149171
	CA*F3743*6D*+TXV	A*VC80804C*C*	34,400	26,800	16.0	13.0	33,000	26,000	34,000	9.0	21,600	1,130	202149172
	CA*F4860*6D*+TXV	A*VC80804C*C*	34,200	26,600	16.0	13.0	33,000	26,000	33,800	9.0	21,600	1,130	202149173
	CA*F4961*6D*+TXV	A*VC80804C*C*	34,800	27,000	16.0	13.0	33,500	26,500	34,000	9.0	21,600	1,130	202149174
	CA*F3642*6D*+TXV	A*VC80804C*C*	34,000	26,400	15.5	12.5	33,000	26,000	33,800	8.5	21,600	1,130	202149175
	CA*F3636*6D*+TXV	A*VC80804C*C*	33,400	26,000	15.5	12.5	32,000	25,000	33,800	8.5	21,400	1,130	202149176
	CHPF3642C6C*+TXV	A*VC80804C*C*	33,000	25,600	16.0	12.5	32,000	25,000	33,000	8.5	21,600	1,130	202149177
	CHPF3743C6B*+TXV	A*VC80804C*C*	33,200	25,800	16.0	13.0	32,000	25,000	33,000	9.0	21,600	1,130	202149178
	CA*F3743*6D*+TXV	A*VC80805C*C*	34,400	26,800	16.0	13.0	33,000	26,000	34,000	9.0	21,600	1,110	202149179
	CA*F4860*6D*+TXV	A*VC80805C*C*	34,400	26,800	16.0	13.0	33,000	26,000	33,800	9.0	21,600	1,110	202149180
	CA*F4961*6D*+TXV	A*VC80805C*C*	34,800	27,000	16.0	13.0	33,500	26,500	34,000	9.0	21,600	1,110	202149181
	CA*F3642*6D*+TXV	A*VC80805C*C*	34,000	26,400	15.5	12.5	33,000	26,000	33,800	8.5	21,600	1,110	202149182
	CA*F3636*6D*+TXV	A*VC80805C*C*	33,400	26,000	15.5	12.5	32,000	25,000	33,800	8.5	21,400	1,110	202149183
	CHPF3642C6C*+TXV	A*VC80805C*C*	33,000	25,600	15.5	12.5	32,000	25,000	33,000	8.5	21,600	1,110	202149184
	CHPF3743C6B*+TXV	A*VC80805C*C*	33,800	26,400	15.5	12.5	32,500	25,500	33,600	9.0	21,600	1,110	202149185
	CA*F3743*6D*+TXV	A*VC80805D*C*	34,400	26,800	16.0	12.5	33,000	26,000	34,000	9.0	21,600	1,100	202149186
	CA*F4860*6D*+TXV	A*VC80805D*C*	34,200	26,600	15.5	12.5	33,000	26,000	34,000	8.5	21,600	1,100	202149187
	CA*F4961*6D*+TXV	A*VC80805D*C*	34,600	27,000	16.0	13.0	33,500	26,500	34,200	9.0	21,600	1,100	202149188
	CA*F3642*6D*+TXV	A*VC80805D*C*	33,800	26,400	15.5	12.5	32,500	25,500	33,800	8.5	21,000	1,100	202149189
	CA*F3636*6D*+TXV	A*VC80805D*C*	33,200	25,800	15.0	12.5	32,000	25,000	33,600	8.5	21,000	1,100	202149190
	CA*F3743*6D*+TXV	A*VC960403BNB*	34,200	26,600	16.0	12.5	33,000	26,000	34,200	9.0	21,600	1,080	202149191
	CA*F4860*6D*+TXV	A*VC960403BNB*	34,000	26,400	15.5	12.5	33,000	26,000	34,200	8.5	21,600	1,080	202149192
	CA*F4961*6D*+TXV	A*VC960403BNB*	34,400	26,800	16.0	12.5	33,000	26,000	34,400	9.0	21,600	1,080	202149193
	CA*F3642*6D*+TXV	A*VC960403BNB*	33,600	26,200	15.0	12.2	32,500	25,500	33,600	8.5	21,000	1,080	202149194
	CA*F3137*6A*+TXV	A*VC960403BNB*	34,400	26,800	16.0	12.5	33,000	26,000	34,200	9.0	21,600	1,080	202149195

AHRI RATINGS (CONT.)

OUTDOOR UNIT	INDOOR UNITS		COOLING RATINGS ^				TVA RATINGS ^		HEATING RATINGS ^			CFM	AHRI #
	COILS/AIR HANDLERS	FURNACES	TOTAL	SENS.	SEER <sup>1</sup>	EER <sup>2</sup>	TOTAL	SENS.	HI <sup>4</sup>	HSPF <sup>5</sup>	LOW <sup>6</sup>		
ASZC16 0361C* (Contd.)	CHPF3743C6B*+TXV	A*VC960403BNB*	33,000	25,600	15.5	12.5	32,000	25,000	33,400	8.5	21,000	1,080	202149196
	CA*F3743*6D*+TXV	A*VC960603BNB*	34,200	26,600	16.0	12.5	33,000	26,000	34,200	9.0	21,600	1,115	202149197
	CA*F4860*6D*+TXV	A*VC960603BNB*	34,000	26,400	15.5	12.2	33,000	26,000	34,000	8.5	21,600	1,115	202149198
	CA*F4961*6D*+TXV	A*VC960603BNB*	34,400	26,800	16.0	12.5	33,000	26,000	34,400	9.0	21,600	1,115	202149199
	CA*F3642*6D*+TXV	A*VC960603BNB*	33,600	26,200	15.0	12.2	32,500	25,500	33,600	8.5	21,000	1,115	202149200
	CA*F3137*6A*+TXV	A*VC960603BNB*	34,400	26,800	16.0	12.5	33,000	26,000	34,000	9.0	21,600	1,115	202149201
	CHPF3743C6B*+TXV	A*VC960603BNB*	33,000	25,600	15.5	12.5	32,000	25,000	33,400	8.5	21,600	1,115	202149202
	CA*F3743*6D*+TXV	A*VM970603BNA*	34,200	26,600	16.0	12.5	33,000	26,000	34,200	9.0	21,600	1,115	202149203
	CA*F4860*6D*+TXV	A*VM970603BNA*	34,000	26,400	15.5	12.2	33,000	26,000	34,000	8.5	21,600	1,115	202149204
	CA*F4961*6D*+TXV	A*VM970603BNA*	34,400	26,800	16.0	12.5	33,000	26,000	34,400	9.0	21,600	1,115	202149205
	CA*F3642*6D*+TXV	A*VM970603BNA*	33,600	26,200	15.0	12.2	32,500	25,500	33,600	8.5	21,000	1,115	202149206
	CA*F3137*6A*+TXV	A*VM970603BNA*	34,400	26,800	16.0	12.5	33,000	26,000	34,000	9.0	21,600	1,115	202149207
	CHPF3743C6B*+TXV	A*VM970603BNA*	33,000	25,600	15.5	12.5	32,000	25,000	33,400	8.5	21,600	1,115	202149208
	CA*F3743*6D*+TXV	A*VC960803BNB*	34,200	26,600	16.0	12.5	33,000	26,000	34,200	9.0	21,600	1,100	202149209
	CA*F4860*6D*+TXV	A*VC960803BNB*	34,000	26,400	15.5	12.5	33,000	26,000	34,200	8.5	21,600	1,100	202149210
	CA*F4961*6D*+TXV	A*VC960803BNB*	34,400	26,800	16.0	12.5	33,000	26,000	34,200	9.0	21,600	1,100	202149211
	CA*F3642*6D*+TXV	A*VC960803BNB*	33,800	26,400	15.0	12.2	32,500	25,500	33,600	8.5	21,000	1,100	202149212
	CA*F3137*6A*+TXV	A*VC960803BNB*	34,400	26,800	16.0	12.5	33,000	26,000	34,200	9.0	21,600	1,100	202149213
	CHPF3743C6B*+TXV	A*VC960803BNB*	33,000	25,600	15.5	12.5	32,000	25,000	33,400	8.5	21,000	1,100	202149214
	CA*F3743*6D*+TXV	A*VM970803BNA*	34,200	26,600	16.0	12.5	33,000	26,000	34,200	9.0	21,600	1,100	202149215
	CA*F4860*6D*+TXV	A*VM970803BNA*	34,000	26,400	15.5	12.5	33,000	26,000	34,200	8.5	21,600	1,100	202149216
	CA*F4961*6D*+TXV	A*VM970803BNA*	34,400	26,800	16.0	12.5	33,000	26,000	34,200	9.0	21,600	1,100	202149217
	CA*F3642*6D*+TXV	A*VM970803BNA*	33,800	26,400	15.0	12.2	32,500	25,500	33,600	8.5	21,000	1,100	202149218
	CA*F3137*6A*+TXV	A*VM970803BNA*	34,400	26,800	16.0	12.5	33,000	26,000	34,200	9.0	21,600	1,100	202149219
	CHPF3743C6B*+TXV	A*VM970803BNA*	33,000	25,600	15.5	12.5	32,000	25,000	33,400	8.5	21,000	1,100	202149220
	CA*F3743*6D*+TXV	A*VC960804CNB*	34,400	26,800	16.0	13.0	33,000	26,000	34,000	9.0	21,600	1,090	202149221
	CA*F4860*6D*+TXV	A*VC960804CNB*	34,200	26,600	16.0	12.5	33,000	26,000	34,000	8.5	21,600	1,090	202149222
	CA*F4961*6D*+TXV	A*VC960804CNB*	34,600	27,000	16.0	13.0	33,500	26,500	34,000	9.0	21,600	1,090	202149223
	CA*F3642*6D*+TXV	A*VC960804CNB*	33,800	26,400	15.5	12.5	32,500	25,500	33,800	8.5	21,000	1,090	202149224
	CA*F3636*6D*+TXV	A*VC960804CNB*	33,400	26,000	15.0	12.5	32,000	25,000	33,600	8.5	21,600	1,090	202149225
	CHPF3642C6C*+TXV	A*VC960804CNB*	32,800	25,600	15.5	12.5	31,500	25,000	33,000	8.5	21,600	1,090	202149226
	CHPF3743C6B*+TXV	A*VC960804CNB*	34,000	26,400	15.5	12.5	33,000	26,000	33,200	9.0	21,600	1,090	202149227
	CA*F3743*6D*+TXV	A*VM970804CNA*	34,400	26,800	16.0	13.0	33,000	26,000	34,000	9.0	21,600	1,090	202149228
	CA*F4860*6D*+TXV	A*VM970804CNA*	34,200	26,600	16.0	12.5	33,000	26,000	34,000	8.5	21,600	1,090	202149229
	CA*F4961*6D*+TXV	A*VM970804CNA*	34,600	27,000	16.0	13.0	33,500	26,500	34,000	9.0	21,600	1,090	202149230
	CA*F3642*6D*+TXV	A*VM970804CNA*	33,800	26,400	15.5	12.5	32,500	25,500	33,800	8.5	21,000	1,090	202149231
	CA*F3636*6D*+TXV	A*VM970804CNA*	33,400	26,000	15.0	12.5	32,000	25,000	33,600	8.5	21,600	1,090	202149232
	CHPF3642C6C*+TXV	A*VM970804CNA*	32,800	25,600	15.5	12.5	31,500	25,000	33,000	8.5	21,600	1,090	202149233
	CHPF3743C6B*+TXV	A*VM970804CNA*	34,000	26,400	15.5	12.5	33,000	26,000	33,200	9.0	21,600	1,090	202149234
	CA*F3743*6D*+MBVC1200**-1A*+TXV		34,000	26,400	16.0	13.0	33,000	26,000	34,000	9.0	21,600	1,150	202149235
	CA*F4860*6D*+MBVC1200**-1A*+TXV		34,200	26,600	16.0	12.5	33,000	26,000	34,000	8.5	21,600	1,150	202149236
	CA*F4961*6D*+MBVC1200**-1A*+TXV		34,600	27,000	16.0	13.0	33,500	26,500	34,200	9.0	21,600	1,150	202149237
CA*F3642*6D*+MBVC1200**-1A*+TXV		33,800	26,400	15.5	12.5	32,500	25,500	33,800	8.5	21,000	1,150	202149238	
CA*F3636*6D*+MBVC1200**-1A*+TXV		33,200	25,800	15.0	12.5	32,000	25,000	33,400	8.5	21,000	1,150	202149239	
CA*F3137*6A*+MBVC1200**-1A*+TXV		34,400	26,800	16.0	13.0	33,000	26,000	34,000	9.0	21,600	1,150	202149240	
CA*F4860*6D*+MBVC1600**-1A*+TXV		34,400	26,800	16.0	13.0	33,000	26,000	33,800	9.0	21,600	1,070	202149241	
CA*F4961*6D*+MBVC1600**-1A*+TXV		34,800	27,000	16.0	13.0	33,500	26,500	34,000	9.0	21,600	1,070	202149242	

OUTDOOR UNIT	INDOOR UNITS		COOLING RATINGS ^				TVA RATINGS ^3		HEATING RATINGS ^			CFM	AHRI #
	COILS/AIR HANDLERS	FURNACES	TOTAL	SENS.	SEER <sup>1</sup>	EER <sup>2</sup>	TOTAL	SENS.	Hi <sup>4</sup>	HSPF <sup>5</sup>	Low <sup>6</sup>		
ASZC16 0361C* (Contd.)	CA*F3642*6D*+MBVC1600**-1A*+TXV		33,800	26,400	16.0	12.5	32,500	25,500	33,800	8.5	21,000	1,070	202149243
	CA*F3636*6D*+MBVC1600**-1A*+TXV		33,400	26,000	15.5	12.5	32,000	25,000	33,800	8.5	21,000	1,070	202149244
	CHPF3642C6C*+MBVC1600**-1A*+TXV		33,000	25,600	15.5	12.5	32,000	25,000	33,800	9.0	21,000	1,070	202149245
	CHPF3743C6B*+MBVC1600**-1A*+TXV		33,200	25,800	16.0	13.0	32,000	25,000	33,000	9.0	21,600	1,070	202149246
	CA*F3743*6D*+MBVC2000**-1A*+TXV		34,400	26,800	16.0	13.0	33,000	26,000	33,800	9.0	21,600	1,170	202149247
	CA*F4860*6D*+MBVC2000**-1A*+TXV		34,400	26,800	16.0	13.0	33,000	26,000	33,800	9.0	21,800	1,170	202149248
	CA*F4961*6D*+MBVC2000**-1A*+TXV		34,800	27,000	16.0	13.0	33,500	26,500	34,000	9.0	21,800	1,170	202149249
	CA*F3642*6D*+MBVC2000**-1A*+TXV		34,000	26,400	16.0	13.0	33,000	26,000	34,000	9.0	21,000	1,170	202149250
	CA*F3636*6D*+MBVC2000**-1A*+TXV		33,400	26,000	15.5	12.5	32,000	25,000	33,600	8.5	21,000	1,170	202149251
	CA*F3743*6D*+TXV	A*VC961005CNB*	34,400	26,800	16.0	12.5	33,000	26,000	34,000	9.0	21,800	1,120	202149252
	CA*F4860*6D*+TXV	A*VC961005CNB*	34,200	26,600	16.0	12.5	33,000	26,000	34,000	8.5	21,600	1,120	202149253
	CA*F4961*6D*+TXV	A*VC961005CNB*	34,600	27,000	16.0	13.0	33,500	26,500	34,200	9.0	21,600	1,120	202149254
	CA*F3642*6D*+TXV	A*VC961005CNB*	33,800	26,400	15.5	12.5	32,500	25,500	33,800	8.5	21,000	1,120	202149255
	CA*F3636*6D*+TXV	A*VC961005CNB*	33,200	25,800	15.0	12.5	32,000	25,000	33,600	8.5	21,600	1,120	202149256
	CHPF3642C6C*+TXV	A*VC961005CNB*	32,800	25,600	15.5	12.5	31,500	25,000	33,800	8.5	21,000	1,120	202149257
	CHPF3743C6B*+TXV	A*VC961005CNB*	34,000	26,400	16.0	12.5	33,000	26,000	33,200	9.0	21,600	1,120	202149258
	CA*F3743*6D*+TXV	A*VM971005CNA*	34,400	26,800	16.0	12.5	33,000	26,000	34,000	9.0	21,800	1,120	202149259
	CA*F4860*6D*+TXV	A*VM971005CNA*	34,200	26,600	16.0	12.5	33,000	26,000	34,000	8.5	21,600	1,120	202149260
	CA*F4961*6D*+TXV	A*VM971005CNA*	34,600	27,000	16.0	13.0	33,500	26,500	34,200	9.0	21,600	1,120	202149261
	CA*F3642*6D*+TXV	A*VM971005CNA*	33,800	26,400	15.5	12.5	32,500	25,500	33,800	8.5	21,000	1,120	202149262
	CA*F3636*6D*+TXV	A*VM971005CNA*	33,200	25,800	15.0	12.5	32,000	25,000	33,600	8.5	21,600	1,120	202149263
	CHPF3642C6C*+TXV	A*VM971005CNA*	32,800	25,600	15.5	12.5	31,500	25,000	33,800	8.5	21,000	1,120	202149264
	CHPF3743C6B*+TXV	A*VM971005CNA*	34,000	26,400	16.0	12.5	33,000	26,000	33,200	9.0	21,600	1,120	202149265
	CA*F3743*6D*+TXV	A*VC81005C*C*	34,400	26,800	16.0	13.0	33,000	26,000	34,000	9.0	21,600	1,150	202149266
	CA*F4860*6D*+TXV	A*VC81005C*C*	34,200	26,600	16.0	12.5	33,000	26,000	34,000	9.0	21,600	1,150	202149267
	CA*F4961*6D*+TXV	A*VC81005C*C*	34,600	27,000	16.0	13.0	33,500	26,500	34,000	9.0	21,600	1,150	202149268
	CA*F3642*6D*+TXV	A*VC81005C*C*	33,800	26,400	15.5	12.5	32,500	25,500	33,800	8.5	21,000	1,150	202149269
	CA*F3636*6D*+TXV	A*VC81005C*C*	33,400	26,000	15.5	12.5	32,000	25,000	33,600	8.5	21,600	1,150	202149270
	CHPF3642C6C*+TXV	A*VC81005C*C*	32,800	25,600	15.5	12.5	31,500	25,000	33,800	8.5	21,600	1,150	202149271
	CHPF3743C6B*+TXV	A*VC81005C*C*	33,200	25,800	16.0	12.5	32,000	25,000	33,200	9.0	21,600	1,150	202149272
	CA*F3743*6D*+TXV	A*VC80604B*C*	34,400	26,800	15.5	12.5	33,000	26,000	34,000	9.0	21,600	1,100	202149273
	CA*F4860*6D*+TXV	A*VC80604B*C*	34,200	26,600	15.5	12.5	33,000	26,000	34,000	8.5	21,600	1,100	202149274
	CA*F4961*6D*+TXV	A*VC80604B*C*	34,600	27,000	16.0	13.0	33,500	26,500	34,200	9.0	21,000	1,100	202149275
	CA*F3642*6D*+TXV	A*VC80604B*C*	33,800	26,400	15.0	12.5	32,500	25,500	34,000	8.5	21,000	1,100	202149276
CA*F3636*6D*+TXV	A*VC80604B*C*	33,400	26,000	15.0	12.2	32,000	25,000	33,400	8.5	21,000	1,100	202149277	
CA*F3137*6A*+TXV	A*VC80604B*C*	34,400	26,800	16.0	12.5	33,000	26,000	34,200	9.0	21,600	1,100	202149278	
CHPF3743C6B*+TXV	A*VC80604B*C*	33,000	25,600	15.5	12.5	32,000	25,000	33,200	8.5	21,000	1,100	202149279	
ASZC16 0481C*	CA*F4961*6D*+MBVC2000**-1A*+TX		48,000	38,400	16.0	13.0	46,500	37,500	47,000	9.0	28,800	1,590	202148824
	AVPTC59C14A*		47,000	37,600	15.5	12.0	45,500	37,000	46,000	8.5	29,000	1,400	202148825
	AVPTC59D14A*		47,000	37,600	16.0	12.5	45,500	37,000	46,000	9.0	29,000	1,510	202148826
	AVPTC61D14A*		48,000	38,400	16.0	13.0	46,500	37,500	47,000	9.0	29,000	1,460	202148827
	CA*F4860*6D*+TXV	A*VC80804C*C*	45,500	36,400	16.0	12.0	44,000	35,500	45,000	9.0	29,000	1,480	202148828
	CA*F4961*6D*+TXV	A*VC80804C*C*	46,500	37,200	16.0	12.5	45,000	36,500	46,000	9.0	29,000	1,480	202148829
	CHPF4860D6D*+TXV	A*VC80804C*C*	46,500	37,200	16.0	12.5	45,000	36,500	46,000	9.0	29,000	1,480	202148830
	CA*F4860*6D*+TXV	A*VC80805D*C*	45,500	36,400	16.0	12.0	44,000	35,500	45,000	9.0	29,000	1,450	202148831
	CA*F4961*6D*+TXV	A*VC80805D*C*	46,500	37,200	16.0	13.0	45,000	36,500	46,000	9.0	29,000	1,450	202148832

OUTDOOR UNIT	INDOOR UNITS		COOLING RATINGS ^				TVA RATINGS ^3		HEATING RATINGS ^			CFM	AHRI #
	COILS/AIR HANDLERS	FURNACES	TOTAL	SENS.	SEER <sup>1</sup>	EER <sup>2</sup>	TOTAL	SENS.	HI <sup>4</sup>	HSPF <sup>5</sup>	LOW <sup>6</sup>		
ASZC16 0481C* (Contd.)	CHPF4860D6D*+TXV	A*VC80805D*C*	46,500	37,200	16.0	12.0	45,000	36,500	46,000	9.0	29,000	1,450	202148833
	CA*F4860*6D*+MBVC1600**-1A*+TXV		46,500	37,200	16.0	12.0	45,000	36,500	46,000	9.0	29,000	1,500	202148834
	CA*F4961*6D*+MBVC1600**-1A*+TXV		47,500	38,000	16.0	12.5	46,000	37,500	46,000	9.0	29,000	1,500	202148835
	CHPF4860D6D*+MBVC1600**-1A*+TXV		47,500	38,000	16.0	12.5	46,000	37,500	46,000	9.0	29,000	1,500	202148836
	CA*F4860*6D*+MBVC2000**-1A*+TXV		46,500	37,200	16.0	12.5	45,000	36,500	46,000	9.0	29,000	1,570	202148837
	CHPF4860D6D*+MBVC2000**-1A*+TXV		48,000	38,400	16.5	12.5	46,500	37,500	47,000	9.0	29,000	1,570	202148838
	CA*F4860*6D*+TXV	A*VC80805C*C*	45,500	36,400	16.0	12.0	44,000	35,500	45,000	9.0	28,400	1,430	202148878
	CA*F4961*6D*+TXV	A*VC80805C*C*	46,500	37,200	16.0	12.5	45,000	36,500	46,000	9.0	28,400	1,430	202148879
	CHPF4860D6D*+TXV	A*VC80805C*C*	46,500	37,200	16.0	12.5	45,000	36,500	46,000	9.0	28,400	1,430	202148880
	CA*F4860*6D*+TXV	A*VC960804CNB*	45,000	36,000	16.0	12.0	43,500	35,500	45,500	9.0	28,400	1,520	202148881
	CA*F4961*6D*+TXV	A*VC960804CNB*	46,500	37,200	16.0	12.0	45,000	36,500	46,000	9.0	28,400	1,520	202148882
	CHPF4860D6D*+TXV	A*VC960804CNB*	46,500	37,200	16.0	12.0	45,000	36,500	46,000	9.0	28,400	1,520	202148883
	CA*F4860*6D*+TXV	A*VM970804CNA*	45,000	36,000	16.0	12.0	43,500	35,500	45,500	9.0	28,400	1,520	202148884
	CA*F4961*6D*+TXV	A*VM970804CNA*	46,500	37,200	16.0	12.0	45,000	36,500	46,000	9.0	28,400	1,520	202148885
	CHPF4860D6D*+TXV	A*VM970804CNA*	46,500	37,200	16.0	12.0	45,000	36,500	46,000	9.0	28,400	1,520	202148886
	CA*F4860*6D*+TXV	A*VC961005DNB*	45,500	36,400	16.0	12.0	44,000	35,500	45,000	9.0	28,400	1,410	202148887
	CA*F4961*6D*+TXV	A*VC961005DNB*	46,500	37,200	16.0	12.0	45,000	36,500	46,000	9.0	28,400	1,410	202148888
	CHPF4860D6D*+TXV	A*VC961005DNB*	46,500	37,200	16.0	12.0	45,000	36,500	46,000	9.0	28,400	1,410	202148889
	CA*F4860*6D*+TXV	A*VC961205DNB*	45,500	36,400	16.0	12.0	44,000	35,500	45,000	9.0	28,400	1,460	202148890
	CA*F4961*6D*+TXV	A*VC961205DNB*	46,500	37,200	16.0	12.0	45,000	36,500	46,000	9.0	28,400	1,460	202148891
	CHPF4860D6D*+TXV	A*VC961205DNB*	46,500	37,200	16.0	12.0	45,000	36,500	46,000	9.0	28,400	1,460	202148892
	CA*F4860*6D*+TXV	A*VM971205DNA*	45,500	36,400	16.0	12.0	44,000	35,500	45,000	9.0	28,400	1,460	202148893
	CA*F4961*6D*+TXV	A*VM971205DNA*	46,500	37,200	16.0	12.0	45,000	36,500	46,000	9.0	28,400	1,460	202148894
	CHPF4860D6D*+TXV	A*VM971205DNA*	46,500	37,200	16.0	12.0	45,000	36,500	46,000	9.0	28,400	1,460	202148895
	CHPF4860D6D*+TXV	A*VC961005CNB*	46,500	37,200	15.5	12.0	45,000	36,500	46,000	9.0	28,400	1,440	202148896
	CA*F4961*6D*+TXV	A*VC961005CNB*	46,500	37,200	16.0	12.0	45,000	36,500	46,000	9.0	28,400	1,440	202148897
	CHPF4860D6D*+TXV	A*VM971005CNA*	46,500	37,200	15.5	12.0	45,000	36,500	46,000	9.0	28,400	1,440	202148898
	CA*F4961*6D*+TXV	A*VM971005CNA*	46,500	37,200	16.0	12.0	45,000	36,500	46,000	9.0	28,400	1,440	202148899
	CA*F4961*6D*+TXV	A*VC81005C*C*	46,500	37,200	15.5	12.0	45,000	36,500	46,500	8.5	28,400	1,520	202148900
	CHPF4860D6D*+TXV	A*VC81005C*C*	46,500	37,200	15.5	12.0	45,000	36,500	46,000	8.5	28,400	1,520	202148901
ASZC16 0601C*	CA*F4961*6D*+MBVC2000**-1A*+TX		56,500	44,000	17.0	12.5	54,500	43,000	59,500	9.5	34,600	1,735	202148726
	AVPTC61D14A*		56,000	43,600	17.0	12.5	54,000	42,500	59,000	9.5	37,000	1,775	202148755
	CA*F4860*6D*+TXV	A*VC80805C*C*	53,000	41,400	15.5	12.0	51,000	40,500	58,000	8.5	36,000	1,515	202148756
	CA*F4961*6D*+TXV	A*VC80805C*C*	55,000	43,000	16.0	12.5	53,000	42,000	59,500	9.2	36,600	1,515	202148757
	CHPF4860D6D*+TXV	A*VC80805C*C*	53,500	41,800	16.0	12.0	51,500	40,500	59,500	9.0	36,600	1,515	202148758
	CA*F4860*6D*+TXV	A*VC80805D*C*	53,000	41,400	15.5	12.0	51,000	40,500	58,000	8.5	36,000	1,460	202148759
	CA*F4961*6D*+TXV	A*VC80805D*C*	55,000	43,000	16.0	12.5	53,000	42,000	59,500	9.5	36,400	1,460	202148760
	CHPF4860D6D*+TXV	A*VC80805D*C*	54,000	42,200	16.0	12.0	52,000	41,000	59,500	9.0	36,400	1,460	202148761
	CA*F4860*6D*+TXV	A*VC81005C*C*	53,000	41,400	15.5	12.0	51,000	40,500	58,000	8.5	36,000	1,525	202148762
	CA*F4961*6D*+TXV	A*VC81005C*C*	55,000	43,000	16.0	12.5	53,000	42,000	60,000	9.2	36,400	1,525	202148763
	CHPF4860D6D*+TXV	A*VC81005C*C*	53,500	41,800	16.0	12.5	51,500	40,500	59,500	9.0	36,400	1,525	202148764
	CA*F4860*6D*+TXV	A*VC961005CNB*	53,000	41,400	15.5	12.0	51,000	40,500	58,000	8.5	36,000	1,520	202148765
	CA*F4961*6D*+TXV	A*VC961005CNB*	54,000	42,200	16.0	12.5	52,000	41,000	60,500	9.2	36,600	1,520	202148766
	CHPF4860D6D*+TXV	A*VC961005CNB*	53,000	41,400	16.0	12.0	51,000	40,500	59,500	9.0	36,600	1,520	202148767
	CA*F4860*6D*+TXV	A*VM971005CNA*	53,000	41,400	15.5	12.0	51,000	40,500	58,000	8.5	36,000	1,520	202148768
	CA*F4961*6D*+TXV	A*VM971005CNA*	54,000	42,200	16.0	12.5	52,000	41,000	60,500	9.2	36,600	1,520	202148769
	CHPF4860D6D*+TXV	A*VM971005CNA*	53,000	41,400	16.0	12.0	51,000	40,500	59,500	9.0	36,600	1,520	202148770

OUTDOOR UNIT	INDOOR UNITS		COOLING RATINGS ^				TVA RATINGS ^3		HEATING RATINGS ^			CFM	AHRI#
	COILS/AIR HANDLERS	FURNACES	TOTAL	SENS.	SEER <sup>1</sup>	EER <sup>2</sup>	TOTAL	SENS.	HI <sup>4</sup>	HSPF <sup>5</sup>	LOW <sup>6</sup>		
ASZC16 0601C* (Contd.)	CA*F4860*6D*+TXV	A*VC961205DNB*	53,000	41,400	15.5	12.0	51,000	40,500	58,000	8.5	36,000	1,530	202148771
	CA*F4961*6D*+TXV	A*VC961205DNB*	55,000	43,000	16.0	12.5	53,000	42,000	59,500	9.2	36,600	1,530	202148772
	CHPF4860D6D*+TXV	A*VC961205DNB*	53,500	41,800	16.0	12.0	51,500	40,500	59,000	9.0	36,600	1,530	202148773
	CA*F4860*6D*+TXV	A*VM971205DNA*	53,000	41,400	15.5	12.0	51,000	40,500	58,000	8.5	36,000	1,530	202148774
	CA*F4961*6D*+TXV	A*VM971205DNA*	55,000	43,000	16.0	12.5	53,000	42,000	59,500	9.2	36,600	1,530	202148775
	CHPF4860D6D*+TXV	A*VM971205DNA*	53,500	41,800	16.0	12.0	51,500	40,500	59,000	9.0	36,600	1,530	202148776
	CA*F4860*6D*+MBVC2000**-1A*+TXV		54,000	42,200	16.0	12.0	52,000	41,000	58,000	9.0	35,600	1,735	202148777
	CHPF4860D6D*+MBVC2000**-1A*+TXV		54,500	42,600	16.5	12.5	52,500	41,500	59,000	9.5	35,600	1,735	202148778
	CA*F4860*6D*+TXV	A*VC961005DNB*	53,000	41,400	15.0	12.0	51,000	40,500	58,000	8.5	36,000	1,520	202148779
	CA*F4961*6D*+TXV	A*VC961005DNB*	55,000	43,000	16.0	12.0	53,000	42,000	60,500	9.2	36,600	1,520	202148780
	CHPF4860D6D*+TXV	A*VC961005DNB*	55,000	43,000	16.0	12.0	53,000	42,000	60,500	9.2	36,600	1,520	202148781

^ Rated in accordance with ANSI/AHRI Standard 210/240

<sup>1</sup> Seasonal Energy Efficiency Ratio

<sup>3</sup> TVA Rating: BTU/h @ 75°F/ 63°F - 95°F

<sup>5</sup> HSPF = Heating Seasonal Performance Factor

<sup>7</sup> CFM at High stage

<sup>2</sup> Energy Efficiency Ratio @ 80°F/ 67°F/ 95°F

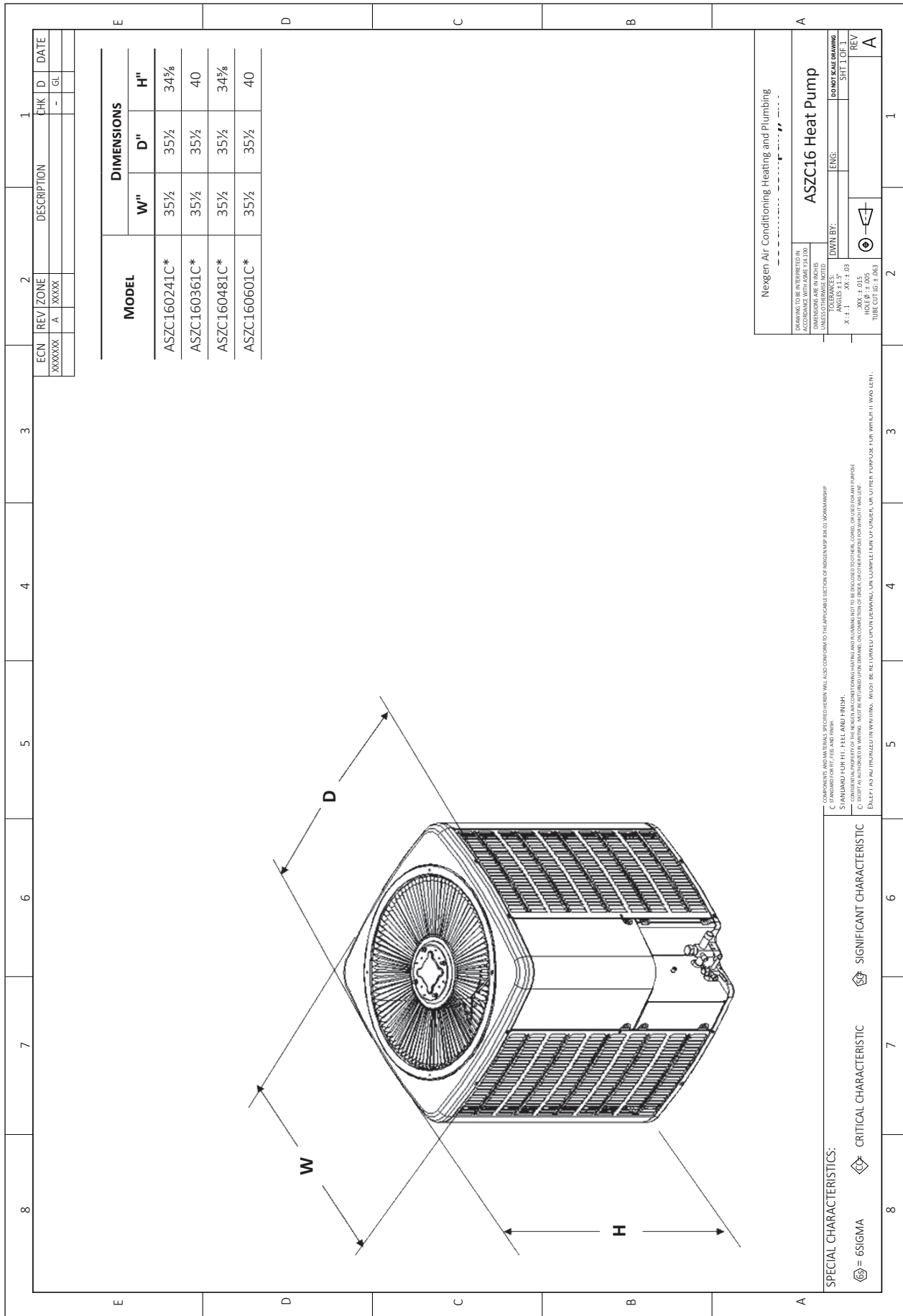
<sup>4</sup> Rated heating capacity at 47°F outdoor per AHRI 210/240

<sup>6</sup> Heating capacity at 17°F outdoor

<sup>8</sup> CFM at Intermediate and low stage

**NOTES**

- Always check the S&R plate for electrical data on the unit being installed.
- When matching outdoor unit to indoor unit, use the piston supplied with the outdoor unit or that specified on the piston kit chart supplied with the indoor unit.
- EEP - Order from Service Dept. Part No. B13707-38 or new Solid State Board B13707-35S. Part No. B13707-38 is not interchangeable with B13707-35S.  
The Ar Nexgen and gas furnace contains the EEP cooling time delay.



ECN	REV	ZONE	DESCRIPTION	CHK	ID	DATE
XXXXXX	A	XXXX		-	GL	

MODEL	DIMENSIONS		
	W"	D"	H"
ASZC160241C*	35½	35½	34¾
ASZC160361C*	35½	35½	40
ASZC160481C*	35½	35½	34¾
ASZC160601C*	35½	35½	40

Nexgen Air Conditioning Heating and Plumbing

ASZC16 Heat Pump

DRAWING TO BE INTERPRETED IN ACCORDANCE WITH ASME Y14.100 DIMENSIONS AND FITS UNLESS OTHERWISE SPECIFIED

UNITS: DIMENSIONS ARE IN INCHES

TOLERANCES:

ANGLES: 1:1

X: ± .005

Y: ± .015

HOLE Ø: ± .005

TUBE CUT (G: ± .005)

DRAWN BY: \_\_\_\_\_

ENG: \_\_\_\_\_

DO NOT SCALE DRAWING

SHT 1 OF 1

REV \_\_\_\_\_

A

COMPONENTS AND MATERIALS SPECIFICATIONS WILL ALSO CONFORM TO THE APPLICABLE EDITIONS OF PROGRAMS P-8101, HONOLULU GROUP C STANDARD FOR FIT, FEEL AND FINISH.

STANDARD FLUOR. HT. FEEL AND FINISH.

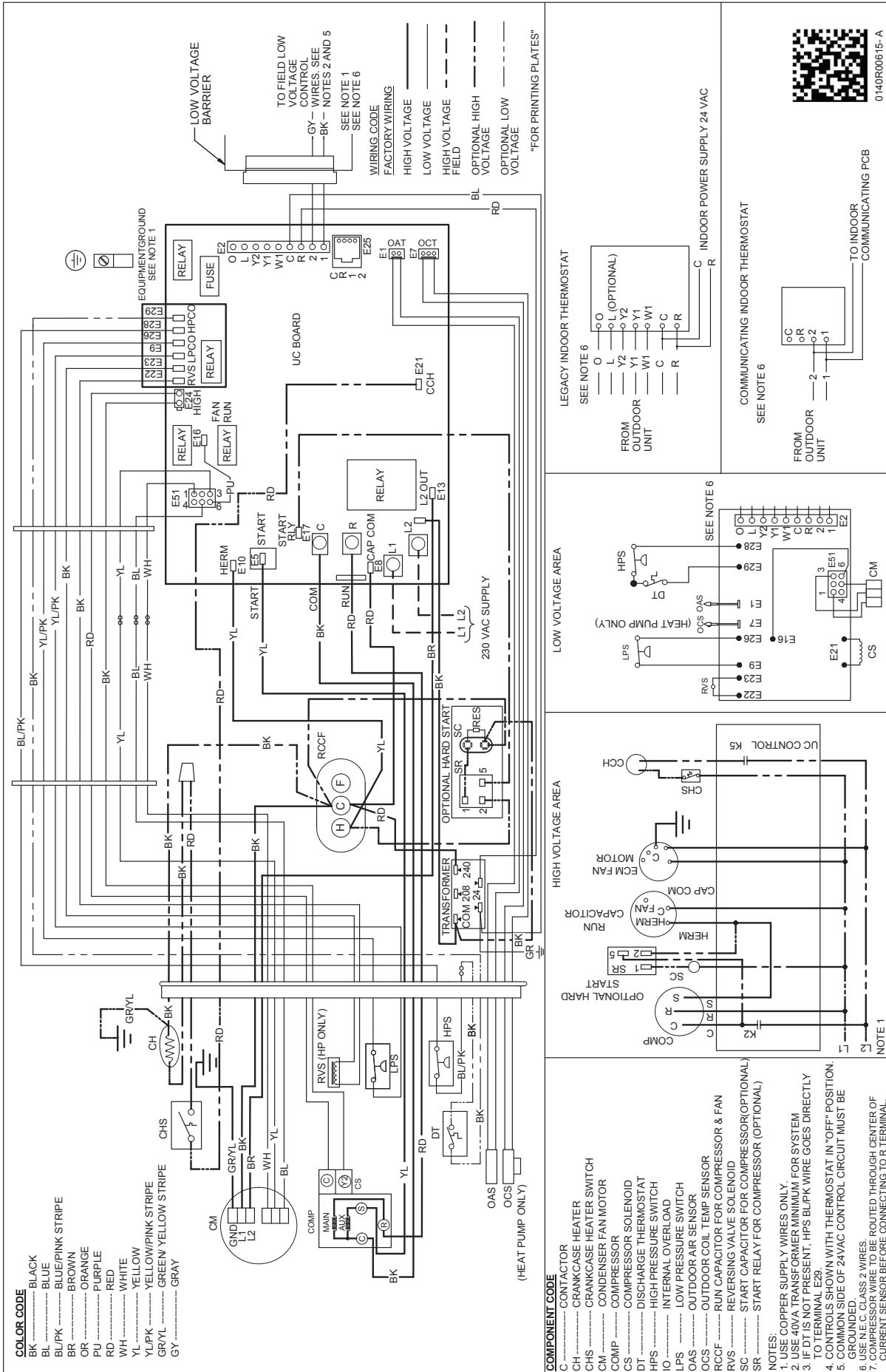
CONFIDENTIAL PROPERTY OF THE NEXGEN AIR CONDITIONING HEATING AND PLUMBING NOT TO BE DISCLOSED TO OTHERS, COPIED, OR USED FOR ANY PURPOSE WITHOUT THE WRITTEN PERMISSION OF NEXGEN AIR CONDITIONING HEATING AND PLUMBING. THIS DRAWING IS FOR INFORMATION PURPOSES ONLY. IT IS NOT TO BE USED FOR CONSTRUCTION, INSTALLATION, OR MAINTENANCE OF ANY EQUIPMENT OR SYSTEM WITHOUT THE WRITTEN PERMISSION OF NEXGEN AIR CONDITIONING HEATING AND PLUMBING.

SPECIAL CHARACTERISTICS:

⊕ = 6SIGMA

⊕ = CRITICAL CHARACTERISTIC

⊕ = SIGNIFICANT CHARACTERISTIC



Wiring is subject to change. Always refer to the wiring diagram or the unit for the most up-to-date wiring.

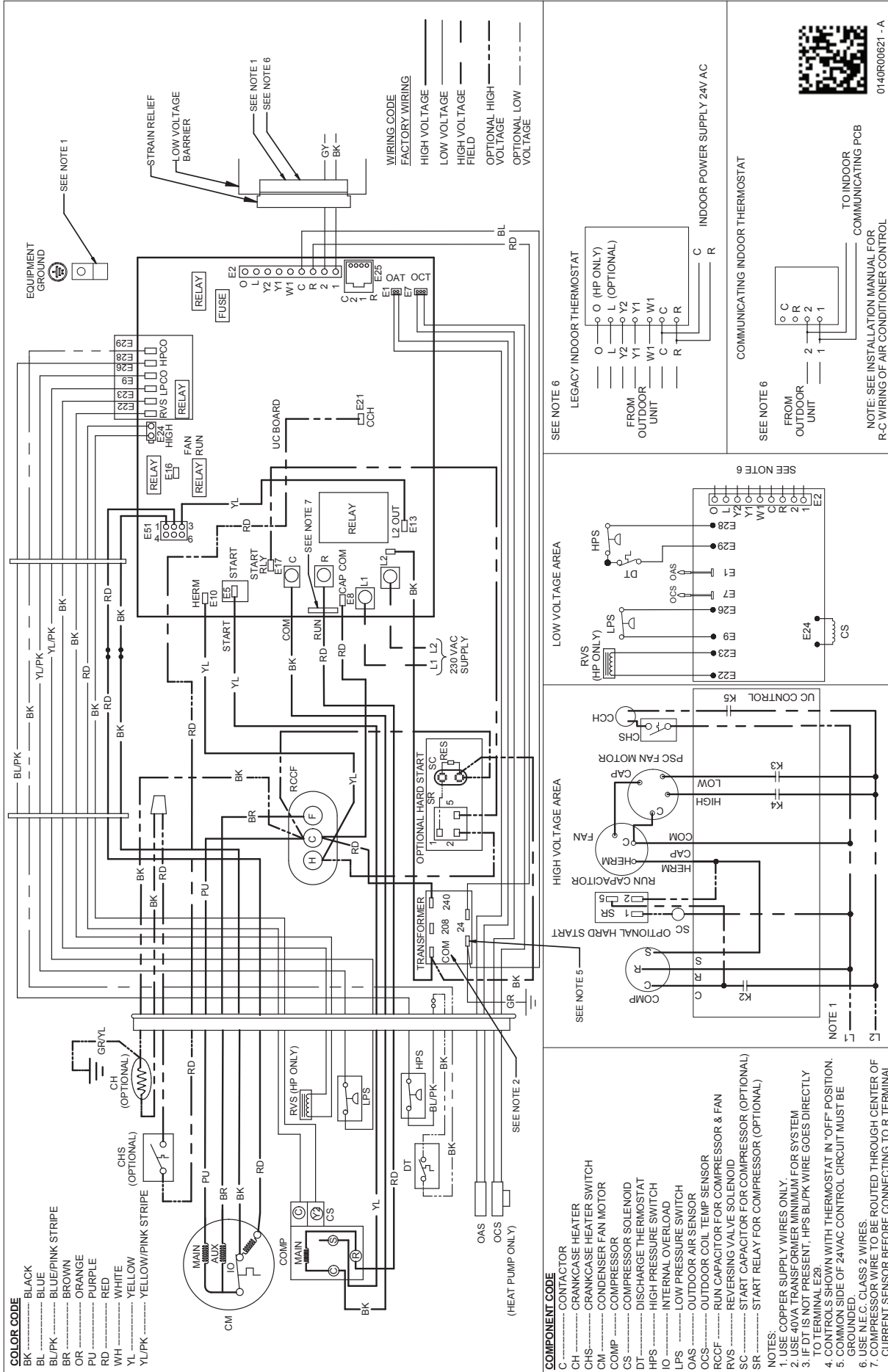


**WARNING**

**High Voltage:** Disconnect all power before servicing or installing this unit. Multiple power sources may be present. Failure to do so may cause property damage, personal injury, or death.



0140R00615-A



**WARNING**

High Voltage: Disconnect all power before servicing or installing this unit. Multiple power sources may be present. Failure to do so may cause property damage, personal injury, or death.

Wiring is subject to change. Always refer to the wiring diagram or the unit for the most up-to-date wiring.





MODEL	DESCRIPTION	ASZC16 024**	ASZC16 036**	ASZC16 048**	ASZC16 060**
ABK-20	Anchor Bracket Kit <sup>◊</sup>	X	X	X	X
B1141643 <sup>1</sup>	24V Transformer	X	X	X	X
CSR-U-1	Hard-start Kit	X	X	X	
CSR-U-2	Hard-start Kit				X
CSR-U-3	Hard-start Kit				X
FSK01A <sup>2</sup>	Freeze Protection Kit	X	X	X	X
OT18-60A <sup>3</sup>	Outdoor Thermostat/Lockout Thermostat	X	X	X	X
TX2N4 <sup>4</sup>	TXV Kit				
TX2N4A <sup>4</sup>	TXV Kit	X			
TX3N4 <sup>4</sup>	TXV Kit		X		
TX5N4 <sup>4</sup>	TXV Kit			X	X

<sup>◊</sup> Contains 20 brackets; four brackets needed to anchor unit to pad

<sup>1</sup> Available in 24V legacy mode only. This feature is integrated in the communicating mode.

<sup>2</sup> Installed on indoor coil

<sup>3</sup> Available in 24V legacy mode only. This feature is integrated in the communicating mode. Required for heat pump applications where ambient temperature falls below 0 OF with 50% or higher relative humidity.

<sup>3</sup> Condensing units and heat pumps with reciprocating compressors require the use of start-assist components when used in conjunction with an indoor coil using a non-bleed thermal expansion valve refrigerant metering device or liquid line solenoid kit. The TXV should always be sized based on the tonnage of the outdoor unit.